

Historic, archived document

Do not assume content reflects current scientific knowledge, policies, or practices.

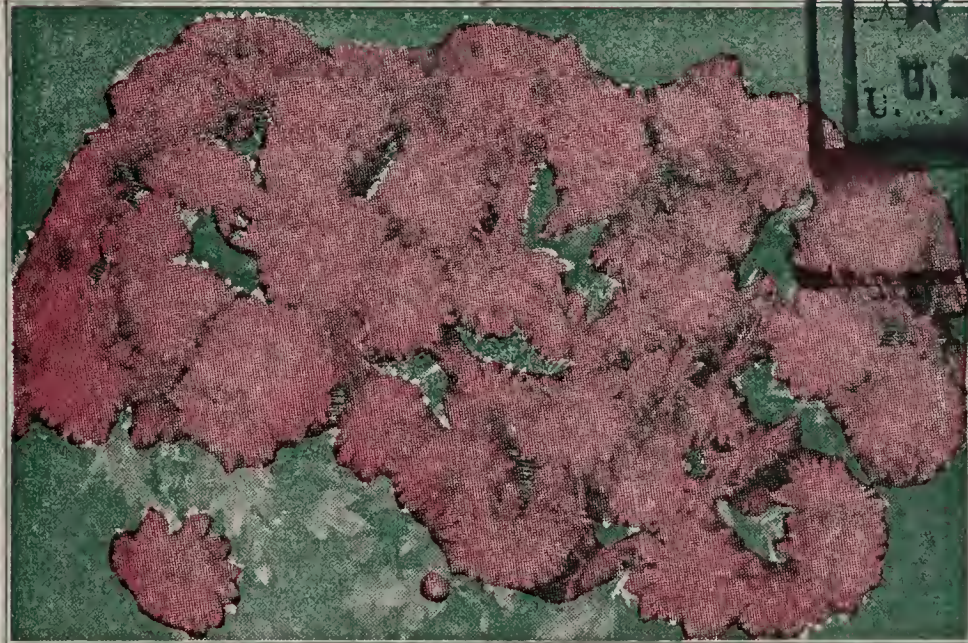
Spring Hill Nurseries

CATALOG OF TREES AND PLANTS THAT GROW

HIGH QUALITY

LOW PRICES

Tippecanoe City, Ohio



PINK CUSHION CHRYSANTHEMUM

Covered with hundreds of blooms the first year. A solid mass of beautiful double lilac-pink flowers from August till late fall. The first pink Chrysanthemum to bloom. Often one year plants have from 500 to 800 blooms. A sensation in bloom that you will be proud to display. Strong pot plants, just the right size to transplant.

27c EACH; 3 FOR 75c



ALL THE OLD FAVORITES

NEW & RARE VARIETIES

A PAGE OF SPECIALS



Flame Cydonia

HARDY CACTUS

OPUNTIA RAFINESQUII—Will stand 20 degrees below zero. Fine for rockeries, border for evergreens, banks, perennial beds, etc. It is evergreen, producing from June till September, large semi-double yellow flowers 4 inches across. An interesting plant for outdoor culture. 30c each; 3 for 75c.



Hardy Cactus

PLUMY BLEEDING HEART

A dwarf growing sort, with beautiful finely cut foliage and showy pink flowers throughout the season. It is equally at home in full shade or sun and perfectly hardy anywhere. 20c each; 3 for 50c.

ALL ITEMS ON THIS PAGE SHIPPED PREPAID

RED FLOWERING DOGWOOD

CORNUS FLORIDA RUBRA—Covered in early spring with masses of large rose-red blooms. Rich red berries in fall. Formally shaped and slow growing. This fine tree will excite admiration wherever grown, being an unusually attractive lawn specimen or group subject. 2 to 3 ft. plants \$1.25 each; 3 for \$3.50.

OAK LEAF HYDRANGEA

A marvelous semi-dwarf shrub. Distinct foliage with a brilliant autumn coloring. Large white flower heads. One of the best shade shrubs but does equally as well in sunlight. 15 to 18 inch plants 40c each; 3 for \$1.00.

CARNATION CRIMSON KING

The true variety which was exhibited at the World's Fair. A new hardy double Carnation equalling those grown in greenhouses, yet withstands a winter temperature 20 degrees below zero without protection. Large, double, striking crimson-red flowers produced from July till frost. Strong pot plants that will bloom this year. 30c each; 3 for 75c.



Carnation Crimson King

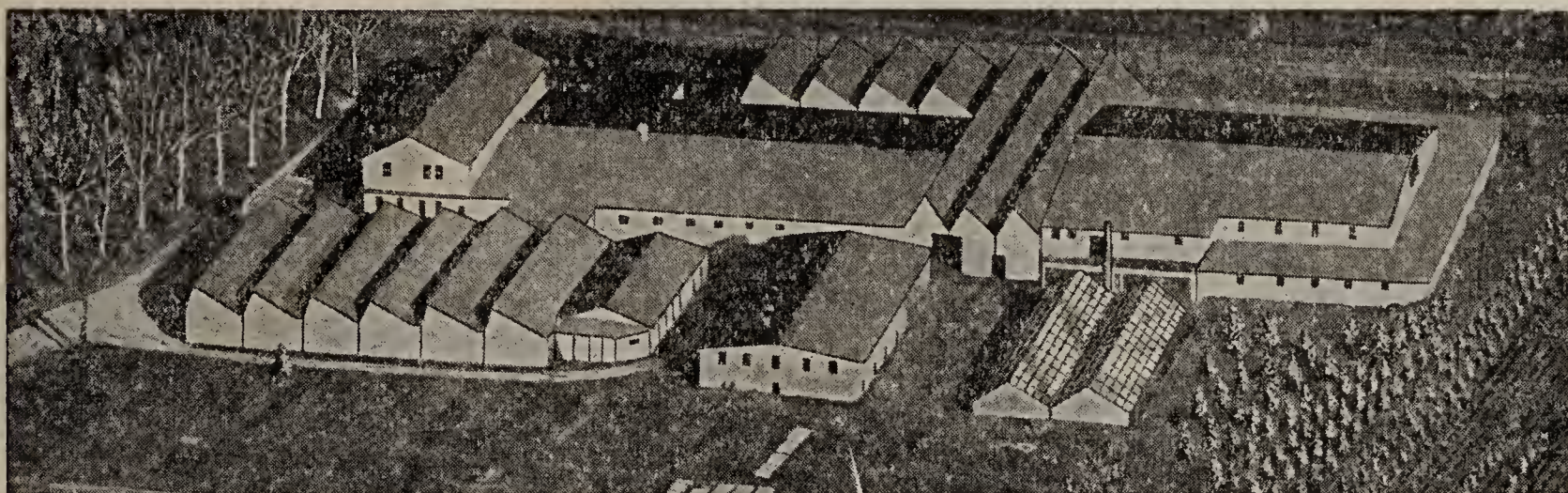


These vigorous one year hybrid tea roses will bloom this season. Plant them this spring and they will give you an abundance of beautiful flowers until late fall. These plants are perfectly hardy and bloom equally as good as field grown plants. 1 collection, one each of the following 10 varieties **\$1.00; 3 collections \$2.50.**

E. G. HILL—Deep velvety red.
FRANCIS SCOTT KEY—Red.
GRUSS EN TEPLITZ—Red.
K. A. VICTORIA—Creamy white.
LADY HILLINGDON—Yellow.

PINK COCHET—Light Pink.
PINK RADIANCE—Deep Pink.
RED RADIANCE—Dark Red.
SUNBURST—Golden Yellow.
WHITE COCHET—White.

10 of the above varieties in 2 yr. old field grown stock **only \$2.50.**



An Airplane View of Our Packing Sheds Covering Two Acres of Floor Space

QUALITY STOCK

We have here in central western Ohio, one of the best sections for producing good nursery stock to be found anywhere in the United States. Added to these natural advantages, we use all modern methods in propagating, growing, cultivating, spraying, pruning, digging, and shipping and the result is satisfactory to our customers. Were it not for this we would not be able to make the strong guarantee shown on this page.

GUARANTEE

We guarantee all our stock to be true to name, good, clean and healthy first-class stock, and to reach you in good growing condition, or the orders will be refilled at no charge provided the complaint is made immediately upon arrival of stock. Should complaint or report not be made within 10 days after arrival of stock, it shall be mutually understood that the stock is satisfactory and no replacement is warranted.

While we have no control over plants after shipment has been made, as their growth depends upon water, soil, proper planting, etc., we will re-

place stock at one half the purchase price provided complaint is made by October first of the same year the stock is shipped. It is mutually agreed and understood that we cannot be held responsible for a greater amount than the original purchase price of stock.

GENERAL INFORMATION

Everything in this catalog that can be conveniently shipped by parcel post will be sent to you **PREPAID.**

ALL TREES and **EVERGREENS** and a few other items too large to be sent parcel post will be shipped either **EXPRESS** or **FREIGHT**, carrying charges Collect.

TERMS

Remittance should accompany the order. It may be made in the manner most convenient to you, by check, money order, draft, or currency.

UNLESS REMITTANCE ACCOMPANIES ORDER, ALL STOCK WILL BE SHIPPED C. O. D. Remember this way of shipment costs more.

NO ORDERS FOR LESS THAN \$1.00 ACCEPTED.



Everblooming Lily

**NOVELTIES
and BARGAINS**

**NEW EVERBLOOMING
MAMMOTH LILY**

PHILIPPENEUSE FORMOSUM—Beautiful large white flowers as lovely as Easter lilies; hardy and free blooming. Large field grown bulbs 29c each; 3 for 79c; 10 for \$2.45.

RED CORAL LILY

TENUIFOLIUM—An abundance of coral-red flowers. One of the most beautiful lilies in cultivation. 25c each; 3 for 69c; 10 for \$1.98.

GOLD BANDED LILY

AURATUM—The largest of the Japanese lilies. White with gold bands and crimson dotted throat. 30c each; 3 for 79c; 6 for \$1.50.

RUBRUM LILY

Large white flowers, rose tinted and spotted with crimson. One of the best. 30c each; 3 for 79c; 6 for \$1.50.

TIGER LILY

Our Tiger Lilies are a large free-blooming strain of deep rich orange with black spots. 20c each; 3 for 50c; 10 for \$1.00.

REGAL LILY

That sensational and most charming lily from China. Beautiful white blooms striped with pink. Free blooming. 2 for 29c; 5 for 69c.

MADONNA LILY

CANDIDUM—Pure white. Can be forced for Easter. One of the choicest lilies. 30c each; 4 for \$1.00.

HENRYI LILY

Beautiful golden-orange blossoms on large flower heads during August and September. Very tall growing. 30c each; 3 for 79c; 6 for \$1.50.

CHINESE BALLOON FLOWER

PLATYCODON—A valuable hardy perennial with neat foliage. Balloon-shaped deep blue flowers opening into large star or cup-shaped blossoms. Blooms abundantly from July till frost. A plant everyone should have. Specially priced 2 for 27c; 5 for 59c.



Hen and Chickens

HEN AND CHICKENS

SEMPERVIVUM—One of the most interesting of the small succulents; ideal for crevices in walls and rock gardens. The leaves are thick and rubbery, arranged in usually tight rosettes; expansion being by a surrounding colony of exact replicas even in their tiniest stage. 17c each; 3 for 39c; 12 for \$1.29.

AZTEC SACRED FLOWER

SACRED MEXICAN LILY—Sacred to the ancient sun worshippers. Opens its petals with the rising sun, being in full glory at noon. Beautiful shades. 25c each.

INDEX

TERMS 8

Apples 20

Asparagus 18

Bargains Order Blank 4

Bulbs 17

Cannas 17

Cherries 20

Dahlias 17

Evergreens ... 11, 14, 15, 16, 30

Ferns, Hardy 5

Flower Seeds 28

Fruit Trees 20, 21

Fruit, Small 18, 19

Garden Seeds 29

Grapes 18

Hedge Plants 30

Iris 5

Lilies 4, 17

Peach 21

Pear 21



Chinese Balloon Flower

Perennials 6, 7, 8, 9

Phlox 5

Rare Plants 2, 35

Raspberries 19

Rhubarb 18

Roses 3, 32, 33, 34

Shade Trees 12, 13

Shrubs 22 to 27

Special Items 10

Strawberries 19

Vines 31

**SPRING HILL'S
RAINBOW PHLOX COLLECTION**

Of the thousands of Phlox we grow each year, we have carefully selected the following varieties as the best for blooming qualities, hardiness, vigor, color, and growing habit. Do not pass up this special offer.

- B. COMPTE**—Rich wine or velvet purple colored Phlox.
- BARON VAN HEECKEREN**—Delicate salmon pink.
- COLONIAL**—Outstanding lavender.
- DR. CHAS. H. MAYO**—Large, white, crimson eye.
- FIREBRAND**—Brilliant orange-scarlet, almost vermillion.

- JULES SANDEAU**—Cerise pink light center, vigorous.
- MARECHAL FRENCH**—Massive bloom deep scarlet with blood red eye.
- MRS. W. VAN BEUNINGEN**—Large, rich salmon-red flowers.
- SPECIAL FRENCH**—New striking clear pink.
- ECLAIREUR**—Tall rosy carmine.



Phlox
17c each.
3 plants only 49c
One each of the above 10 varieties for only \$1.45.

SPECIAL
MISS LINGARD PHLOX
The best Phlox in cultivation. Very large heads of pure white flowers. In June, September and October. 16c each; 3 for 39c; 10 for \$1.19.



Hardy Ferns

HARDY FERNS

Natural effects can be produced with Hardy Ferns. Very hardy and can stand sun or shade but do best in moist shady locations. They require no care and are attractive all season.

- OSTRICH FERN**—Large plummy leaves; tall growing.
- ROYAL FERN**—Compact, shiny Locust-like leaves.

**ALL ITEMS ON THIS PAGE
—PREPAID—**

Large clumps 25c each; 3 for 54c; 6 for \$1.00.

HOLLYHOCKS
RAINBOW COLLECTION — One of the most magnificent hardy perennials. Plant among shrubbery or for border and background. Field grown plants that will bloom this year. Wonderful mixed strain of pastel shades. 3 for 24c; 6 for 39c; 12 for 69c.

NEW EVERBLOOMING HARDY CARNATION

FURST BISMARCK—We are fortunate to be one of the first to offer this free-flowering, fast-growing carnation. The double rosy-pink flowers resemble greenhouse carnations. For us this variety is the hardiest, easiest grown and most free

blooming of any of the recently imported hardy carnations. Because of a large stock we are offering this new variety at popular prices. Pot grown plants that will bloom this year.
25c each 3 for 69c 5 for 98c

HARDY PERENNIAL SWEET PEAS

The flowers borne in clusters are larger and more gorgeous than the annual Sweet Pea. Fast growing vine, very hardy, and a free bloomer.
3 plants for 33c 6 plants for 59c

IRIS

The pick of the new and late prize winning varieties. We are offering this magnificent collection of Iris so low in price you cannot afford to be without them. One each of the varieties listed below individually labelled for \$1.29.

- MORNING SPLENDOR**—Large rich reddish violet. 10c each; 3 for 25c.
- MOTHER OF PEARL**—Pale violet with deeper shadings. 10c each; 3 for 25c.
- QUAKER LADY**—Rich, lavender, blue and gold. 10c each; 3 for 25c.
- FRIEDA MOHR**—Pinkish lilac. Fall's deep rose. 35c each; 3 for \$1.00.
- BRUNO**—Yellow and lavender. 35c each, 3 for \$1.00.
- MONT BLANC**—Beautiful, clear snow white. 10c each; 3 for 25c.
- LORD OF JUNE**—Lavender. Fall's rich aniline blue. 15c each; 3 for 40c.
- AMBER**—Amber yellow, red gold beard. 10c each; 3 for 25c.
- HARRIET PRESBY**—Tall light rosy violet. 10c each; 3 for 25c.
- LILAC WONDER**—Fine blue Siberian Iris. Excellent cut flower. Pretty grass like foliage. 15c each; 3 for 40c.

A \$1.60 value for only \$1.29 postpaid.

FRAGRANT DOUBLE TUBEROSE

One of the most beautiful late summer flowering bulbs. Long compact spikes of double, fragrant, waxy, white flowers.

10c each 3 for 20c 6 for 35c 12 for 75c



Tuberose

Hardy Garden Flowers

SUPERIOR SIZE AND QUALITY. ALL PLANTS
BLOOMING SIZE AND WILL BLOOM
YEAR AFTER YEAR.



Achillea



Gaillardia

PLANTS ON THIS PAGE
PREPAID.

5 for only 67c

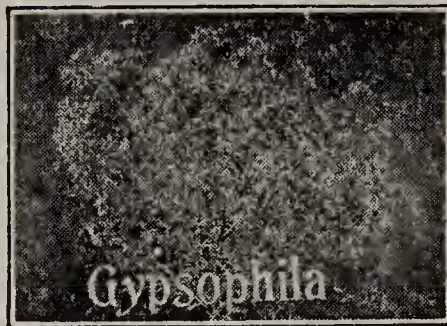
(All Strong Field Grown Plants)

17c each; 3 for 45c; 6 for 80c; 10 for \$1.25

ACHILLEA PTARMICA (The Pearl)
—Pure double white. Excellent cut
flower. Blooms all summer.

ACHILLEA CERISE QUEEN—New
beautiful Milfoil with rosy cerise
flowers.

GAILLARDIA OLD ROSE—Its pet-
als are of that lovely soft rose shade.
New variety.



Gypsophila

GAILLARDIA TANGERINE (Blan-
ket Flower)—Masses of large coppery
orange flowers; distinct strain. Any
soil.

ENGLISH HYBRID DELPHINIUM—
Beautiful blue flowers in all shades of
blue borne on long spikes up to 6 ft.
tall. Select and imported.



Giant Purple Cone Flower

BABY'S BREATH (Repens)—
Everblooming dwarf trailing
Baby's Breath. Pinkish white
flowers. Good for rockery or
border.

ARTEMISIA (Silver King)—
Ghost Plant. Striking and dis-
tinct silver foliage. Fine for
winter bouquets when dried.

ROCK ROSE (*Helianthemum*)—A dwarf perennial with silky
green leaves. Resembles a small evergreen. The brilliantly col-
ored pink and yellow flowers are very showy.

MAIDEN PINK (*Dianthus Deltoides*)—A mass of brilliant little
crimson flowers during June and July. The plant is of dwarf
habit. Easy to grow.

CAT MINT or **GROUND IVY** (*Nepeta Mussini*)—Beautiful
lavender flowers borne above the distinctly silver leaves. A good
border plant. Very hardy.

COAT FLOWER (*Tunica Saxifraga*)—Delicate little pink flow-
ers are produced all summer on these pretty little tufted plants.

CORNFLOWER (*Centaurea Dealbata*)—Silvery cut leaves.
Large and beautiful lacey, rose-pink flowers. Good for cutting.
A truly old-fashioned flower.

YELLOW CORNFLOWER—A large globe-shaped thistle-like
flower of a distinct yellow color. Good cut flower. The plant is
not thorny.

HARDY AGERATUM—A mass of beautiful
purple flowers from August until frost. Fine for
cutting.

SWEET ROCKET (*Hesperis Matronalis*)—
Fragrant purple flowers borne on showy spikes.

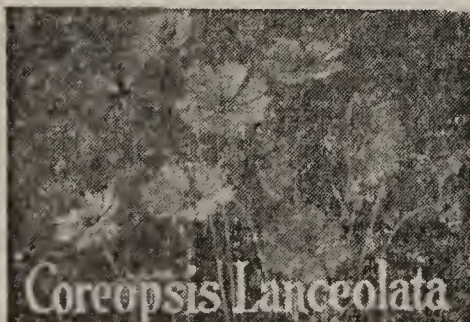
POTENTILLA OR CINQUEFOIL—A dwarf
plant. The leaves resemble strawberries. Var-
ious shades of orange to coppery red.

VERONICA (*Spicata*)—Striking blue flowers
borne on spikes about 2 feet tall from July un-
til frost. The most gorgeous of the Veronicas.



Sweet William

SWEET WILLIAM
(*Dianthus Barba-
tus*)—An old fa-
vorite. Finest va-
rieties, selected
strain. Choice of
three colors. Red,
pink, white.



Coreopsis Lanceolata

COREOPSIS (Mayfield
Giant)—Larger deep yel-
low flowers, very distinct,
grand for cutting. Any
soil.



Chamomile

HARDY MARGUERITE
(Chamomile or Anthemis)
—Bright yellow flowers,
useful border plant, good
for cutting. Blooms from
early spring till frost.



Plantain or Day Lily

PLANTS ON THIS PAGE
PREPAID.
5 for only 67c
(All Strong Field Grown Plants)
17c each; 3 for 45c; 6 for 80c; 10 for \$1.25



Liatris

DAY LILY (*Funkia Coerulea*)—Broad green leaves; abundance of blue flowers during July and August.

VARIEGATED BUGLE—Variegated leaves, unusual, very showy, blue flowers. Early spring.

BUGLE—Compact plant, bronze foliage, blue flowers. Grows well under any condition. Dwarf.

ROCK CRESS—Dwarf, with attractive bluish gray foliage. Covered with white flowers in early spring. Good for rockeries and borders.



Chrysanthemums

CHRYSANTHEMUMS

(Early Blooming Types)

LADY FLORENCE—Large flowering type. Brick red and yellow petals. Very showy.

LADY DORIS—Yellow, very double.

FIELDS OF SNOW—Pure button pearly white.

LADY VIOLET—Large yellow calyx surrounded by a color of old gold and coppery red. As open as a Gaillardia.

MRS. FRED SHOAFF—Immense bloomer, lavender flowers, yellow centers.

HARDY ASTERS

ASTER ST. EGWIN—A pleasing rosy-pink, very free blooming.

ASTER CLIMAX—Tall spikes, large bluish orchid flowers. Fine for cutting.

CUPID'S DART (*Catananche*)—Heads of pretty deep blue flowers on long stems. Long blooming period. Excellent for cutting.

CORNFLOWER (*Centaurea Montana*)—Grows 2 ft. high bearing large feathery blue flowers. Long blooming period.

COAT FLOWER (*Tunica Saxifraga*)—A pretty tufted plant producing light pink flowers all summer. Dwarf.

ADAM'S NEEDLE (*Yucca Fila*)—Evergreen leaves, produces large branching spikes of creamy white flowers. Grows to 6 ft.

LIATRIS (*Blazing Star-Kansas Gay Feather*)—Long spikes of brilliant rose-purple flowers; easy to grow.

SHASTA DAISY (*Alaska*)—Largest of the white flowering Daisies. Yellow centers. Fine for cutting.

SHASTA DAISY (*Hartje & Elder*)—New improved variety, one of the largest and earliest. In bloom for Memorial Day.

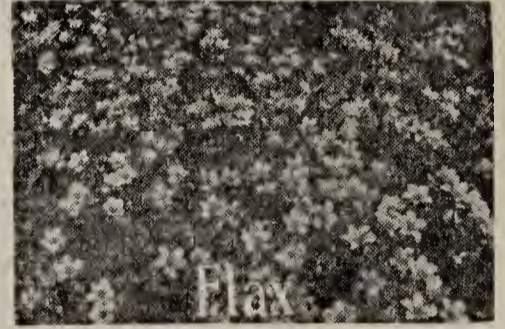
SNOW IN SUMMER—Silvery gray foliage all season. A creeping plant covered with a solid mass of white flowers in early spring.



Stokes Aster

STOKES ASTER—Lavender blue, *Centaurea*-like blossoms. Succeeds in any sunny location.

ASTER MAUVE CUSHION—Dwarf. Cushion-shaped plants covered with silvery mauve flowers. Blooms late.



Flax

FLOWERING FLAX (*Linum Perenne*)—Profusion of pretty pale blue flowers; neat border plant.

MULLEIN PINK—Beautiful silvery gray leaves. Striking carmine red blooms slightly fringed.



Turtle Head

TURTLE HEAD (*Pentstemon Tor. Barbatus*)—Brilliant scarlet flowers from June until August. Very showy.

PINK BEAUTY SAPONARIA—Fast growing rock plant. Rosy-pink flowers in great numbers.



Hardy Pansy

HARDY PANSIES (*Viola Cornuta*)—Finest strain, mixed colors; excellent for rockery or border.

HELIANTHUS MISS MELLISH—An extra profuse bloomer. Yellow daisy-shaped flowers with attractive dark centers.

PERENNIALS



MOURNING BRIDE — Pale blue flowers, fine for cutting and exhibition.

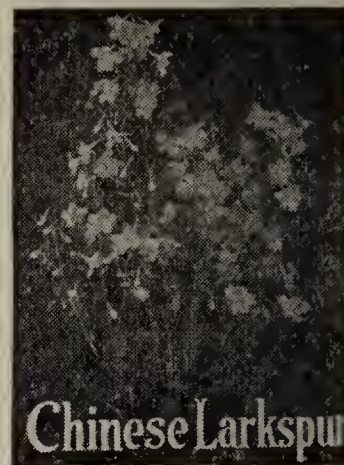
YELLOW DAY LILY (Hemerocallis)—Dwarf day lily. Fragrant golden flowers.

SCULL CAP—New plant with us. Deep blue flowers, snapdragon-like flowers. Long blooming period. Excellent shade.

LARKSPUR or **CHINESE DELPHINIUM** ("Queen of the Blues")—Light blue flowers. Long blooming period. Good for cutting.

HARDY FERNS—Very stately. Good for shady places.

WALL FLOWER (Cherianthus)—Rich orange flowers in abundance. Long succession of bloom. Very showy.



BASKETS OF GOLD (Alyssum Saxatile)—A solid ball of delightful golden flowers each spring.

ORIENTAL POPPY—Choice of red or orange pot plants. Extra large bloom.

SALVIA AZUREA—Deep blue flowers on long spikes and silvery foliage.

CHINESE TUFTED GRASS—A rare dwarf grass with ornamental plumes.

SEDUM SPECTABILE BRILLIANT (Live Forever or Stone Crop)—Brilliant red flower clusters.

SILVER GLOBE (Echinops)—Large heads of metallic blue flowers, followed by silvery globular balls.



HOUSE LEEK—Very attractive, hardy, succulent plants for the rock walls. The rosette-like thick leaves are fleshy and pointed. The small clumps spread very slowly, filling crevices between the rocks.

POPPY MALLOW (Creeping Poppy)—Large crimson flowers. Very striking color. Long blooming period.



CHINA PINK—Clove Pink or Old Fashion Garden Carnation—Mixed colors. Very fragrant, fine strain.

SALVIA THE VATICANS—Bright pinkish-blue flowers. Strikingly effective.

HARDY SWEET PEAS—These plants are suitable for growing on arches, pergolas, trellises, or trailing over rough banks. Very good for cut flowers.



BUTTERFLY WEED—Brilliant orange flowers in flat clusters. Very showy.

WOUNDWORT STACHYS—Fine, old-fashioned cottage garden plant for edging; useful in rock gardens; dwarf; soft silvery foliage.

CREeping SPEEDWELL (Veronica Repens)—A prostrate spreading plant with miniature blue flowers. Excellent border and rockery plant.

PURPLE LOOSE STRIFE (Lythrum)—Large rose-purple spikes. Good cut flower.

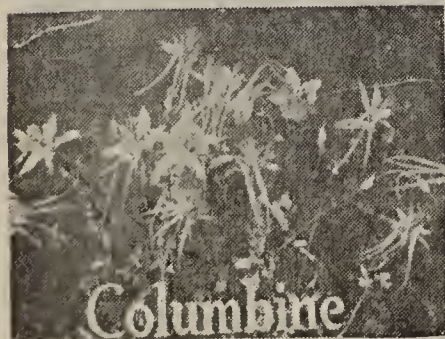
HARDY VERBENA—One plant that blooms from early spring until late fall. Delicate orchid-colored flowers.

HARDY HIBISCUS—Mixed colors. Very large flowers like single Hollyhocks. Very showy in the perennial background.

✓ SEEDS ON PAGE 28 ✓

GIANT FORGET-ME-NOT (Anchusa)—Tall, with broad leaves and long spikes of Forget-Me-Not flowers.

VERBASCUM PHOENICEUM—English hybrid strain of the choicest colors. 18 inch flower spikes.



COLUMBINE (English Longspur) — Select strain. Mixed colors. Very good cut flower.

ALL PLANTS ON THIS PAGE
PREPAID

4 Plants For 49c

16c each; 3 for 39c; 6 for 67c



MALTESE CROSS (Lychnis Chalcedonica)—Vivid scarlet flowers. All summer; a plant for every garden.

PERENNIALS

ANEMONE WHIRLAND—Large showy white flowers in fall. Good cut flower. Every garden should have some.

HARDY VERBENA—Blooms abundantly from early spring till frost. Clusters of delicate orchid flowers.

ROCK ROSE (*Helianthemum*)—Pink, yellow or salmon flowers; silvery gray leaves all winter. Resembles evergreen.

SAGE (*Salvia the Vatican*)—Large flower heads of bright pinkish-blue flowers. 2 to 2½ ft. tall. Very good.

FALSE DRAGON HEAD (*Physostegia*)—We offer a select dwarf strain 12-18 in. tall with large compact spikes of bright rose colored flowers.



Candytuft

CANDYTUFT (*Iberis Gibraltarica*)—Flowers white and purple. Very large and showy.

CORALBELL (*Heuchera*)—Delicate scarlet or crimson flowers. Long blooming period. Very hardy.

BLUE FRINGED DAISY (*Erigeron*)—Large daisy-shaped blooms with high crowned yellow centers and delicate lavender petals. Good cut flower. Blooms from June to July.



Darkspur

JAPANESE DAY LILY (*Funkia Subcordata*)—Very large pure white fragrant flowers in August and September.

JAPANESE SPURGE (*Euphorbia*)—Dense heads of yellow flowers. Thick smooth silvery gray leaves. Look nice all summer.



Forget-me-not

FORGET-ME-NOT (*Anchusa Myosotidiflora*)—Vivid blue flowers. Blooms early in spring. Pretty foliage.

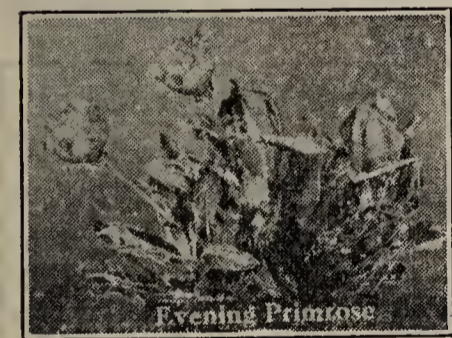
LYTHRUM—Excellent cut flower with long summer blooming period. Large rosy-lavender spikes. 2½ to 3 ft.

YELLOW FLOWERED LUPINE—Long spikes of clear yellow flowers, similar in shape and size to Lupines, except for a distinct yellow coloring.

SPECIAL

PIN CUSHION FLOWER (*Scabiosa*)—Blooms continually. The lovely soft lavender flowers are borne on stems 1½ to 2 feet tall. June to September. Two year plants **2 for 33c prepaid.**

PAINTED DAISY—Attractive fern-like leaves. Rose colored flowers. Very pretty, good for cutting.



Evening Primrose



Sea Lavender

SEE DOUBLE FLOWERED PAINTED DAISIES INSIDE BACK COVER

EVENING PRIMROSE (*Oenothera Missourensi*)—A dwarf variety with largest golden flowers followed by attractive winged pods.

ALL PLANTS ON THIS PAGE PREPAID

4 Plants For Only 63c
22c Each; 3 For 54c; 6 For 97c

SEA LAVENDER (*Statice*)—Thick leathery green leaves. Pretty blue flowers similar to Forget-me-nots. In dense clusters. Good to dry for winter bouquets.

GOLDEN FLOWERING FLAX (*Linum Flavum Nanum*)—Clear, deep, golden flowers from May to August. A new variety with larger flowers. Destined to be the leading Flax. Very Showy.

PLUME POPPY (*Bocconia Cordata*)—Creamy white flowers borne in feathery plumes. Immense flat, silvery green leaves on pronounced pearl-pink stalks. Easy to grow; long blooming period.

ZEBRA GRASS—Attractive lawn plant. Good for planting near pools. The long, narrow, green leaves are striped with yellow. The silvery plumes make very good winter bouquets.

BLUE PEA FLOWERED INDIGO—Masses of dark blue sweet pea-shaped flowers on long spikes 2 feet high. Attractive foliage all summer. Flowers very good for cutting. Plant is very hardy.

A PAGE OF SPECIAL ITEMS

WATER HYACINTHS

Spikes of Hyacinth-like blooms of a delicate lilac-rose color. Not hardy. Grows well indoors during winter.

1 for 19c; 3 for 47c

PEACH TREES

Good, government inspected trees, 18 to 24 inches high, or commercial size planted by orchardists who know their business. Your selection of Elberta, J. H. Hale, and Belle of Georgia. See description on page 21.

3 for 54c; 10 for \$1.45

PEONIES

Our selection of the best prize winning varieties at a big saving.

First Prize White
First Prize Pink
First Prize Red

ALL 3 FOR 50c

SWEET SHRUB Calycanthus

Large, odd, double, spicy fragrant flowers of chocolate-red color in spring. Old-fashioned Sweet Scented Shrub. 10 to 12 inches.

3 for 39c

LOMBARDY POPLAR

The most striking and picturesque tall, columnar tree that grows. Field grown, 3 to 4 foot trees.

3 for 57c

IRISH JUNIPER

5 year old. Description on page 14. 3 for 79c

SHIPPED PREPAID IT WILL PAY YOU TO READ THEM ALL



Hills of Snow

HILLS OF SNOW

Two year old plants that will flower for you this year. They do well in sun or shade, and bloom from July until frost.

4 for 50c



Ghost Plant

GHOST PLANT

Silvery white foliage from early spring until late fall. Can be cut and dried for winter bouquets. Excellent for blending with summer bouquets. The foliage appears as if dusted with silver.

3 for 39c

RED BARBERRY

An improved Barberry with purple or red leaves. Most popular introduction in recent years. A chance to start this beautiful shrub at a low price.

3 for 25c

COLORADO BLUE SPRUCE

Select color of silvery blue. Will make a beautiful tree for specimen planting. Five year old field grown, 12 to 15 inches.

97c each

CHINESE MAGNOLIA

The finest Magnolia grown. Large flowers 5 to 7 inches across of deep purplish color which appear before the foliage in early spring. Another big bargain. Three year old plants, 12 to 15 inches.

1 for 75c; 3 for \$2.00

SIX ROCK GARDEN PLANTS

Our selection of Spring Hill's choice perennials. We guarantee a wide variety of color. One of each kind.

6 for 69c

HIGH BUSH BLUEBERRY

Will thrive in any soil and very hardy. Glossy foliage, white flowers, followed by highly ornamental red berries turning dark blue. Excellent for birds. Blooms and produces berries from July until freezing weather. Two year old plants, 18 to 24 inches. An outstanding value.

1 for 24c; 3 for 57c

SPIREA ANTHONY WATERER

Dwarf Red Spirea

Most popular low growing shrub in existence. Does well under all normal conditions. Clusters of pink flowers all season. Two year, 10 to 12 inch, bushy plants. 2 for 27c

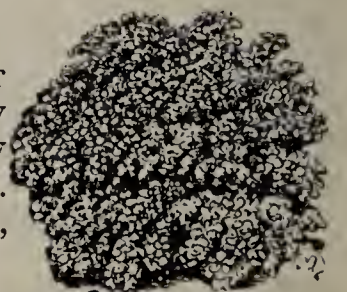


SPIREA A. WATERER

SPIREA VAN HOUTTEI

This get acquainted offer is a real value. Commonly called Bridal Wreath. Every home should have some. Good blooming size plants, 2 year old.

4 for 49c



SPIREA
VAN HOUTTEI

SPECIALY PRICED EVERGREENS NEW GRAFTED VARIETIES

Wonderful opportunity to save on the new and most expensive varieties. Grow them a few years and have beautiful plants of the most costly varieties.

JUNIPER MEYERI—Choice dwarf novelty. Blue as Blue Spruce. Attractive foliage and an unusual habit of growth. 8 to 10 in. 40c each; 2 for 75c.

JUNIPER SABINA VON EHRON—A new spreading dwarf evergreen with waxy green foliage the year round. Develops fast and gracefully. A new gem for rockeries and foundation plantings. 10 to 12 in. 40c each; 2 for 75c.

JUNIPER SCHOTTI—Light yellowish green foliage that does not change in the winter. Compact, symmetrical, pyramidal evergreen. One of the best upright Junipers. 10 to 12 in. 40c each; 2 for 75c.

JUNIPER BERKI—Symmetrical, upright with fine plummy silver foliage till frost; then becomes overlaid with purple tones. 10 to 12 in. 40c each; 2 for 75c.

JUNIPER KOSTERIANA—Semi-dwarf, spreading, similar to Juniper Pfitzeriana. Bluish green color, spreading its handsome foliage naturally and gracefully. 10 to 12 in. 40c each; 2 for 75c.

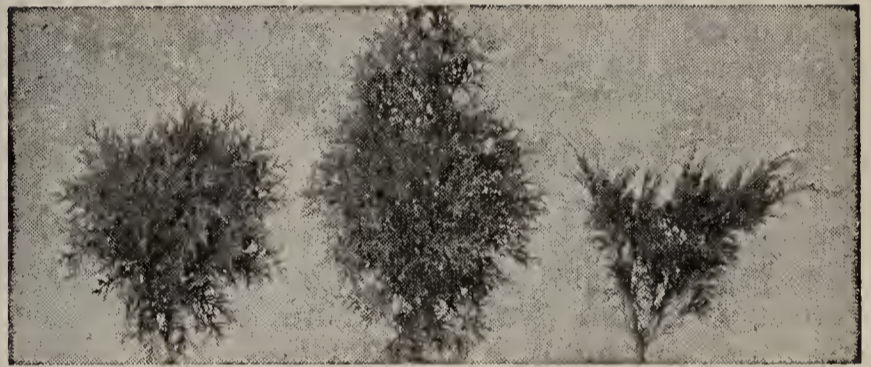
JUNIPER VIRGINIANA GLOBOSA—Grows like Globe Arbor Vitae. No trimming necessary. Naturally dwarf; more beautiful. Disease and drought resistant. Will replace other globe-shaped varieties. 8 to 10 in. 40c each; 2 for 75c.

JUNIPER VIRGINIANA SMITHI—Semi-dwarf, upright. Beautiful waxy foliage of pale green summer and winter. Admired by all who see this new variety. Very compact growing. 10 to 12 in. 40c each; 2 for 75c.

FOUR ROCK GARDEN EVERGREENS

One each of golden, blue, silver, and green color. Select stocky plants; three and four years old. Can be used in rock gardens or any other place.

A well planted Rock Garden
ALL POSTPAID FOR \$1.00



MONEY SAVING IDEA

They grow into value each year and you save on original purchase price. Easy to plant and care for. Plant and cultivate them like tomato or cabbage plants. In two or three years you will have large landscape size plants.

American Arbor Vitae 10 to 12 in. See description on page 15. 25c each; 5 for \$1.00.

Chinese Biota 15 to 18 in. See description on page 16. 30c each; 4 for \$1.00.

Siberian Arbor Vitae 10 to 12 in. See description on page 15. 30c each; 4 for \$1.00.

Globosa Arbor Vitae 8 to 10 in. See description on page 15. 30c each; 4 for \$1.00.

Dwarf Golden Biota 10 to 12 in. See description on page 16. 35c each; 3 for \$1.00.

Mugho Pine 9 to 12 in. See description on page 15. 35c each; 3 for \$1.00.

Juniper Pfitzeriana 8 to 10 in. See description on page 14. 35c each; 3 for \$1.00.

Juniper Sabina 8 to 10 in. See description on

page 14. 35c each; 3 for \$1.00.

Juniper Andora 8 to 10 in. See description on page 16. 35c each; 3 for \$1.00.

Juniper Albo Variegata 8 to 10 in. See description on page 14. 35c each; 3 for \$1.00.

Juniper Horizontalis Green 8 to 10 in. See description on page 16. 35c each; 3 for \$1.00.

Juniper Horizontalis Blue 8 to 10 in. See description on page 16. 35c each; 3 for \$1.00.

Juniper Irish 8 to 10 in. See description on page 14. 35c each; 3 for \$1.00.

Juniper Conspicua Aurea 8 to 10 in. See description on page 16. 35c each; 3 for \$1.00.

Moerheim Blue Spruce 4-year trees. See description on page 15. \$1.00 each.

SPECIAL FIVE SELECT VARIETIES

Biota Aurea Nana	\$.35
Juniper Meyeri	.40
Juniper Pfitzeriana	.35
Juniper Andora	.35
Juniper Bar Harbor	.35
	<hr/>
	\$1.80

A \$1.80 value for \$1.29

TAXUS CUSPIDATA

HARDY JAPANESE YEW—Waxy shiny green foliage of irregular and picturesque outline. Most expensive evergreen grown outside of Blue Spruce. Thrives in dense shade, drought resistant, and withstands smoke and city gases.

Choice: Cuspidata Spreading—Cuspidata Upright. 10 to 12 in. 35c each; 3 for \$1.00.



Ornamental Shade Trees

OHIO BUCKEYE

The State Tree for Ohio. This beautiful semi-dwarf tree has magnificent spikes of white flowers borne in profusion. 3 to 4 ft. branched plants 70c each; 2 for \$1.35; heavy 5 yr. old plants 4 to 6 ft. \$1.25 each; 2 for \$2.00.



RED LEAVED NORWAY MAPLE

The young leaves are bright red, changing to purplish green as they grow older. In autumn they are golden yellow. 6 to 8 ft. trees \$1.50 each; 2 for \$2.75.

PINK FLOWERING DOGWOOD

In early spring it is covered with masses of large rose-red flowers. An unusually attractive lawn specimen or group subject. This fine tree will excite admiration wherever grown. Strong 3 yr. trees 3 to 4 ft. tall \$1.25 each.

2 SILVER MAPLE \$1.01

This is the best known of all Maples, having wide, slender, spreading branches. Will thrive anywhere. 6 to 8 ft. trees \$1.00 each; 2 for \$1.01; 8 to 10 ft. trees \$1.50 each; 2 for \$1.51.

CHINESE ELM

This is a new Elm, being a native of China. Very rapid growing, forming a very dense head with smaller darker leaves than the American Elm. 2 to 3 ft. trees 25c each; 2 for 40c; 6 to 8 ft. trees 79c each; 2 for \$1.50.



RED BUD (Judas Tree)

A very ornamental tree of medium size, with perfect heart-shaped leaves. Blooms early in spring before the leaves appear, covering the branches with small rosy-purple, pea-shaped flowers. 18 to 24 in. 25c each; 2 for 40c; strong 4 yr. old field grown plants 3 to 4 ft. 75c each; 2 for \$1.25.

MOLINE ELM

This is an outstanding variety of Elm with a pyramidal habit of growth. The leaves are very large and of a deep shining green color. The bark of this Elm is a smooth light grey color. Very good for street planting. 6 to 8 ft. trees \$1.00 each; 2 for \$1.75; 8 to 10 ft. trees \$1.35 each; 2 for \$2.50.

Free Landscape Advice

WEeping WILLOW TREES

GOLDEN BARK WILLOW—The most beautiful of the Willows, with its slender, drooping branches golden in color. 4 to 5 ft. trees 60c each; 2 for \$1.00.

GREEN BARK WILLOW—Same as above except its branches are green. 6 to 8 ft. trees \$1.00 each; 2 for \$1.75.

MAGNOLIA SOULANGEANA

The finest Magnolia grown. Immense cupshaped rose-purple flowers 4 to 5 inches across in early spring before leaves appear. A beautiful tree for the lawn. 12 to 18 in. plants \$1.25 each.



MAGNOLIA TRIPETALA

UMBRELLA MAGNOLIA—A rapid growing, hardy Magnolia. The leaves are often 2 feet long, clustered at the tips of the twigs and radiate out like spokes of an umbrella. The large fragrant white flowers are 7 to 10 inches across and have 6 to 9 petals. The rose colored fruit is borne on long cones. 6 to 8 ft. \$2.50 each; 3 for \$6.00.



2 AMERICAN ELM

\$1.01

One of the most majestic and graceful of our shade trees. Hardy, a rapid grower, and long lived. 6 to 8 ft. trees \$1.00 each; 2 for \$1.01; 8 to 10 ft. trees \$1.50 each; 2 for \$1.51.

PERSIMMON

A beautifully shaped tree with rich green foliage and graceful habit. A tree that is rare but easily grown. The plants we offer are a select strain from large fruiting trees. The fruit is an inch or more in diameter. Specially priced to our customers. 2 to 3 ft. plants 50c each; 3 for \$1.25.



Flowering Trees That Grow



UMBRELLA TREE

CATALPA BUNGEI—An ideal tree for formal effects or as a specimen. Has a broad dome-shaped head at the top of a long, straight stem making a very unique ornamental tree. 5 to 7 ft. stems and 2 yr. heads specially priced \$1.00 each; 2 for \$1.50.



UMBRELLA TREE

PRUNUS YEDOENSIS

JAPANESE FLOWERING CHERRY—This is the cherry which is planted so extensively in the parks, temple grounds, and streets of Tokyo. A tree-like shrub with white to pink flowers, slightly fragrant, borne in clusters of 2 to several. At a real bargain price. 18 to 24 in. plants 55c each; 2 for \$1.00.

LOMBARDY POPLAR

One of the most striking and picturesque trees. Grows in a pyramidal shape and makes an excellent tree for screens on city lots. 3 to 4 ft. trees 5 for \$1.00; 6 to 8 ft. trees 35c each; 3 for \$1.00.

ORIENTAL SYCAMORE

A lofty wide spreading tree used in great numbers to create vistas of dense green shade along new streets which require quick development of shade and ornamentation. 6 to 8 ft. trees \$1.00 each; 2 for \$1.75.

DOUBLE FLOWERING CRAB

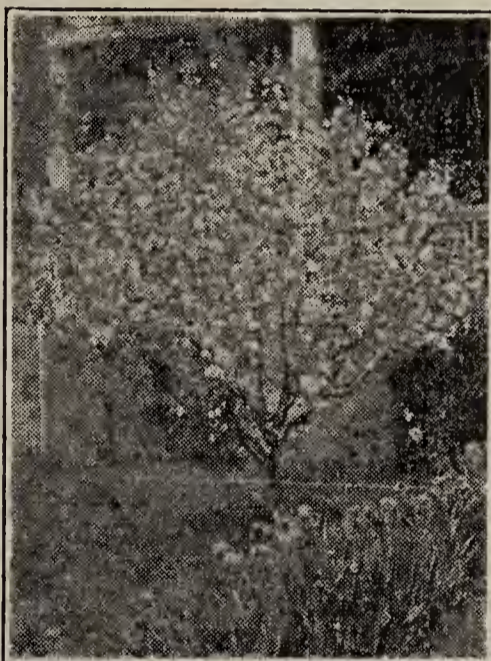
BECHTELS—Pale pink double flowers; upright habit; very attractive when used as a specimen. 2 to 3 ft. trees \$1.00 each.

ALDENHAMENSIS CRAB—New and considered one of the finest of the red-flowered Crab Apples. 3 to 4 ft. trees 50c each; 3 for \$1.35.

MULBERRY

RUSSIAN—*Morus Alba Tartarica*—Large black fruit resembling Blackberries, excellent quality. Valued as an excellent fast growing shade tree. Attracts birds. 4 to 5 ft trees 60c each; 3 for \$1.50; 18 to 25 inch trees 20c each; 3 for 40c.

Weeping—5 to 7 ft. trees \$1.50 ea.



Flowering Crab

TULIP TREE

A tall, hardy ornamental tree, flowers in June. 5 to 6 ft. trees 90c each; 2 for \$1.65.

SILVER RED CRAB—A new dwarf variety with many outstanding characteristics. Very hardy, with silvery-red foliage and beautiful red flowers and fruits. 4 to 6 ft. trees 75c each; 2 for \$1.45.

ELEYII CRAB—A vigorous growing Crab of recent introduction from England. The leaves are red and the flowers are single and of a deep pink or red color. 2 to 3 ft. trees 40c each; 3 for \$1.00.

MAIDEN HAIR TREE

JAPANESE or GINKGO BILOBA—A beautiful rare graceful tree suited for every ornamental condition. Withstands heat, cold, smoke and poor soil. Disease free. Best as specimen for lawns and street tree. Parallel viewed leaves resembling a fan or maidens hair. 6 to 8 ft. trees \$1.69 each; 4 to 5 ft. branched top 95c each.

NORWAY MAPLE

One of the best and most beautiful of the Hard Maples. Large, handsome tree with a compact head. 6 to 8 ft. trees \$1.00 each; 2 for \$1.65; 8 to 10 ft. trees \$1.50 each; 2 for \$1.98.

DOWNY HAWTHORNE

Bright green leaves with showy creamy white flowers and scarlet edible fruit. Fine for mass and specimen planting. 3 to 4 ft. trees 60c each; 3 for \$1.50.

ROSE TREE OF CHINA

The most beautiful and showy of all small trees. Blooms before the leaves appear in the spring, being covered with very double rose-like pink flowers. 2 to 3 ft. trees 60c each; 3 for \$1.50.

EUROPEAN MOUNTAIN ASH

An ornamental tree with large beautiful showy fruit, which turns orange-red in the fall, often remaining on the trees all winter. 6 to 8 ft. trees \$1.00 each; 2 for \$1.75.

SCARLET FRUITED HAWTHORNE

One of the most beautiful of the Hawthornes, with double white flowers. Beautiful in foliage and scarlet fruit in autumn. 3 to 4 ft. trees 60c each; 3 for \$1.50.



EUROPEAN MOUNTAIN ASH



Hawthorn

SPRING HILL'S CHOICE EVERGREENS

FOR YEAR ROUND BEAUTY

PLEASE TAKE NOTICE: This year to save our customers money on express and freight charges, our evergreens will be shipped with bare roots, puddled in mud and wrapped in moss to insure safe delivery. These evergreens are all perfect specimens and have been grown in good rich soil. All evergreens shipped express collect.

B & B stands for Balled and Burlapped and means evergreens are dug with solid ball of rich Miami River Valley loam soil in which they are growing and wrapped firmly with burlap to hold the earth in place. Add 50c per tree for B. B. on all evergreens on this page.



Austrian Pine

thickly on spreading branches. A handsome and picturesque trees growing to the height of 100 feet. Valuable for screens, windbreaks, or specimens. 24 to 30 inch trees 74c each; matched pair \$1.38; 30 to 36 inch trees 98c each; matched pair \$1.79; 5 for \$4.29.

SCOTCH—A very hardy tree which will grow in almost any soil. Light green needles 2 to 3 inches long. Very symmetrical in growth. 24 to 30 inch trees 74c each; matched pair \$1.38; 30 to 36 inch trees 98c each; matched pair \$1.79; 5 for \$4.29.

CYPRESS—RETINOSPORA

PLUMOSA—Plumed Cypress—A handsome-shaped evergreen of medium growth with very thick light green foliage. Excellent for group planting. 15 to 18 inch trees 49c each; matched pair 89c; 5 for \$1.95.

PLUMOSA GOLDEN—Similar to the above but with beautiful golden plummy foliage. 15 to 18 inch trees 59c each; matched pair \$1.07; 5 for \$2.49.

JUNIPER

SABINA—Beautiful dark moss-green foliage. A good dwarf evergreen. A very low price on this evergreen. 18 to 24 inch plants 89c each; matched pair \$1.69; 5 for \$3.95; 2 to 2½ ft. plants \$1.40; matched pair \$2.55.

IRISH—Tall growing with columnar habit. Foliage light green in color. 24 to 30 inch plants \$1.25 each; matched pair \$2.35; 3 to 4 ft. plants \$2.00 each; matched pair \$3.75.

VIRGINIANA (Red Cedar)—2 to 3 ft. \$1.25 each; matched pair \$2.35.

SILVER RED CEDAR (Va. Glauca)—2 to 3 ft. \$1.35; matched pair \$2.55.

ALBO VARIEGATA—18 to 24 in. specimens \$1.25 each; matched pr. \$2.35.

PFITZERI—18 to 24 inch plants \$1.35 each; matched pair \$2.45.



Retinospora Plumosa



FOUNDATION PLANTING

1—Biota Aurea Nana	15-18"	\$1.00	6—Juniper Pfitzeri	18-24"	\$1.35
2—Juniper Chinensis Mascula	3-4'	\$2.00	7—Arbor Vitae Globosa	12-15"	.89
3—Arbor Vitae Siberian	15-18"	.74	8—Juniper Sabina	18-24"	.89
4—Juniper Irish	24-30"	\$1.25	9—Juniper Virginiana	2-3'	\$1.25
5—Hemlock	2-2½'	\$1.75	10—Arbor Vitae American	30-36"	.98

One each of the above, \$12.10 value, all for \$10.95.

Two each of the above, \$24.20 value, all for \$21.00.



EVERGREENS

ADD VALUE AND BEAUTY

Remember Our Evergreens Are Shipped Bare Root
Express Collect

Add 50c per plant for B & B on all evergreens on this page.

SPRUCE

Plant Spruce for living Christmas Trees.

NORWAY—This tree is extensively planted in many of the states to be used as a windbreak or shelter. 2 to 3 ft. trees 98c each; matched pair \$1.69.

BLACK HILL—Symmetrical and compact in habit of growth with the foliage varying from a green to a bluish tint in color. 18 to 24 inch trees \$1.00 each; matched pair \$1.75.

WHITE—A compact upright growing evergreen especially suitable for cold climates. Varies in color the same as Black Hill but not quite so compact. 18 to 24 inch trees \$1.00 each; matched pair \$1.75.

PINE

Not shipped west of the Mississippi River.

MUGHO—The only dwarf Pine, never growing over 3 to 4 ft. tall. Nothing better for rock places or in any group planting where dwarf trees are needed. Dark green foliage. 10 to 12 inch trees 89c each; matched pair \$1.69; 12 to 15 inch trees \$1.25 each; matched pair \$2.35.

ARBOR VITAE

AMERICAN—Very good for grouping and for formal effects it is unsurpassed. May be trimmed to any desired height and is fine for hedges. Foliage of a light green color. 24 to 30 inch trees 74c each; matched pair \$1.38; 30 to 36 inch trees 98c each; matched pair \$1.69. For hedging 2 ft. size, 10 for \$5.50; 100 for \$50.00.

GOLDEN (Geo. Peabody)—An upright habit of growth with foliage similar to the American only golden in color. A truly beautiful tree. 2 to 2½ ft. trees \$1.25 each; matched pair \$2.35.

DOUGLAS AUREA—Very hardy, bushy habit of growth with slender branches. Foliage bright yellow. 2 to 2½ ft. trees \$1.00 each; matched pair \$1.75.

SIBERIAN—Used for background plantings. Foliage a heavy dark green. Very hardy. Similar to American but of a more compact habit. 15 to 18 inch plants 74c each; matched pair \$1.38; 18 to 24 inch plants 98c each; matched pair \$1.75.

GLOBOSA—A dense dark green form of the Arbor Vitae, growing naturally in globe form. Very dwarf habit. 12 to 15 inch trees 89c each; matched pair \$1.69; 5 for \$3.95.

FIR

DOUGLAS—Makes a beautiful specimen tree. A rapid grower and thrives well in any situation. Foliage soft light green color. 18 to 24 inch trees 74c each; matched pair \$1.38.

BALSAM—Conical shaped with dark green foliage, silvery underneath. 2 to 3 ft. trees \$1.35 each; matched pair \$2.55.

SILVER (Pectinata)—Similar to Balsam in habit of growth but with beautiful silvery foliage. 18 to 24 inch trees \$1.45 each; matched pair \$2.75.

MOERHEIM BLUE SPRUCE

The most conspicuous of all the Spruces. Should be used as a specimen to exhibit its beauty to the fullest extent. A striking blue color. Our plants are grafted from original and bluish strain we imported under special quarantine from Holland. 4 yr. trees \$1.00 each.

DOGZOFF

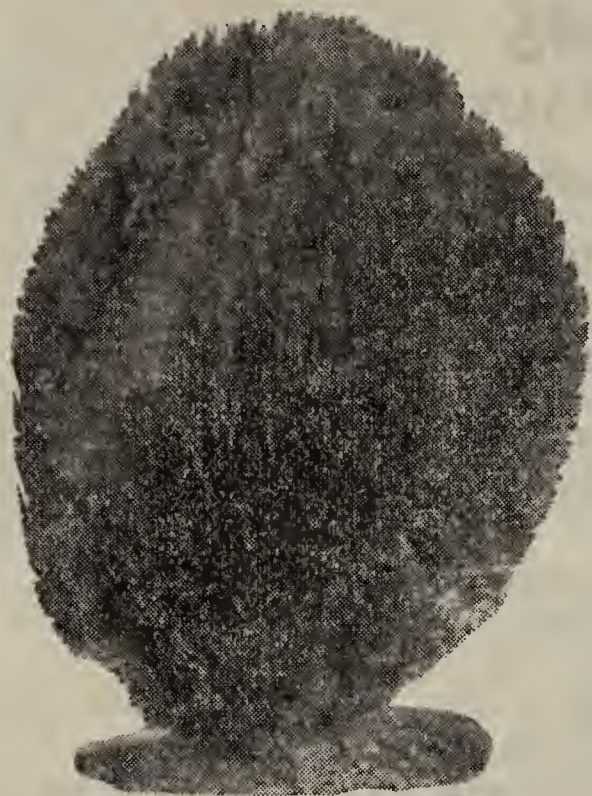
Keeps the dogs away. If you are bothered by animals of any kind spray with Dogzoff. One application lasts from 2 to 3 weeks. Season's supply 69c prepaid.



EVERGREENS

FOR YEAR ROUND BEAUTY

Shipped With Bare Roots Wrapped In Moss—Express Collect
If you want evergreens dug and shipped B & B add 50c
additional per plant



Golden Biota

BIOTA

CHINESE (Orientalis)—A pyramidal tree of very compact form with bright green foliage. 18 to 24 inch trees 69c each; matched pair \$1.29; 24 to 30 inch trees 89c each; matched pair \$1.69.

GOLDEN DWARF—This is known as the Golden Chinese Arbor Vitae. A beautiful compact little evergreen with clear golden foliage. Its size and color make it a very desirable evergreen for group plantings. 15 to 18 inch trees \$1.00 each; matched pair \$1.89; 5 for \$4.25.

HEMLOCK

One of the most graceful and handsome of the evergreens. Especially valuable for hedgings, windbreaks or for specimen plantings. Best tall growing variety for shade. 2 to 2½ ft. trees \$1.75 each; matched pair \$3.35; 15 to 18 inch trees \$1.15 each; matched pair \$2.15.

NOVELTIES IN EVERGREENS

2 Evergreens In 1

Our men, after years of experimenting with new evergreens, have brought out a novelty tree with two varieties grafted on one plant. We have only grafted a few of each collection and we are offering them at an unusually low price. Mailing size only. Supply limited. They are not shipped B & B.

NOVELTY NO. 1—Silver Red Cedar and Cannarti Red Cedar. This will be an upright growing evergreen with both blue and green foliage, 79c each; 2 for \$1.49.

NOVELTY NO. 2—Cannarti Red Cedar and Juniper Meyeri. This combination consists of an upright and low growing evergreen. Blue and green foliage. 79c each; 2 for \$1.49.

NOVELTY NO. 3—Biota Aurea Nana and Biota Bonita. A dwarf compact evergreen with golden and green foliage. 79c each; 2 for \$1.49.

NOVELTY NO. 4—Juniper Waukegan Green and Juniper Waukegan Blue. A beautiful prostrate evergreen with green and blue foliage. 79c each; 2 for \$1.49.

Order Novelties By Number

JUNIPER

HIBERNICA FASTIGIATA—Narrow compact tall variety growing 7 to 8 feet. Resembles Irish Juniper. 24 to 30 in. trees \$1.25 ea.; Matched pr. \$2.35.

ANDORA—New dwarf spreading evergreen with a unique color; being a bright green in the spring changing to a silvery purple each fall. Of low compact growth. Beautiful when contrasted with other varieties because of exquisite winter coloring. 15 to 18 inch specimen 89c each; matched pair \$1.64; 5 for \$3.90; 2 to 2½ ft. spec. \$1.25 ea.; matched pair \$2.39; 5 for \$5.79.

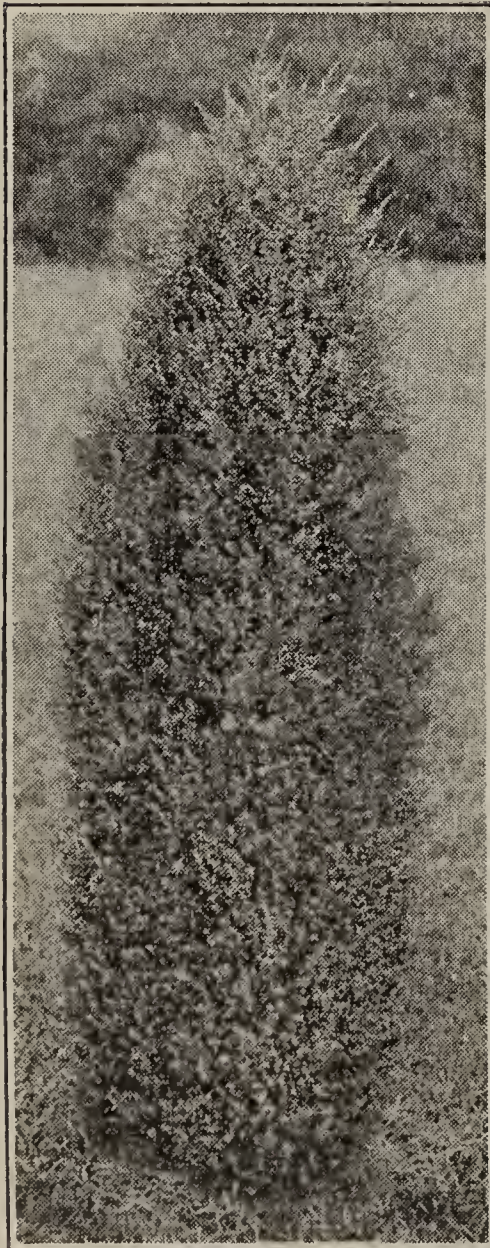
MASCULA—Grayish green pyramidal Juniper, for columnar effect. 2 to 2½ ft. trees 95c each; matched pair \$1.79; 5 for \$3.95; 3 to 4 ft. trees \$2.00 each; matched pair \$3.75.

HORIZONTALIS BLUE—Prostrate evergreen with striking blue color. Can be kept in shape by occasional trimming. Ideal for terraces. 18 to 24 inch plants 95c each; matched pair \$1.74; 5 for \$3.95.

HORIZONTALIS GREEN—Similar to the above but with green foliage; 18 to 24 inch plants 89c each; matched pair \$1.59; 5 for \$3.79.

GOLDEN ROD (Juniper Conspicua Aurea)—A rare grafted variety of spreading growth. Delightful golden plummy foliage. Very showy, fine for contrast in foundation and group planting. Like Juniper Pfitzeriana in value of growth. A truly wonderful evergreen. 15 to 18 inch plants \$1.00 each; matched pair \$1.89; 2 to 2½ ft. plants \$1.75 each; matched pair \$3.25.

GRAFTED SILVER CEDAR (Juniper Scopulorum)—Thick set silvery blue foliage fine and lacy. Compact erect growth. A wonderful contrast evergreen for landscaping. 2½ to 3 ft. trees \$1.35 each; matched pair \$2.55.



Juniper Fastigiata

SPRING HILL'S DELUXE COLOR COLLECTION OF THE FINEST JUNIPERS

1 Grafted Silver Cedar	2½ to 3 ft.	Silver	\$1.35
1 Golden Rod	15 to 18 in.	Golden	1.00
1 Andora	2 to 2½ ft.	Green & Purple	1.25
1 Horizontalis Blue	18 to 24 in.	Blue	.95
1 Chinensis Mascula	2½ to 3 ft.	Green	1.15
			<hr/> 5.70

\$5.70 value for only \$4.69

All Bulbs On This Page Prepaid
 BEAUTIFUL FLOWERS THIS SEASON OF BEST VARIETIES
 AT ATTRACTIVE PRICES.



Gladiola

GLADIOLI

- APRICOT GLOW**—Early; clear orange. 3 for 15c; 10 for 40c.
 - ALBANIA**—Favorite of the white class. 3 for 15c; 10 for 40c.
 - GOLDEN DREAM**—Clear deep yellow. 3 for 15c; 10 for 40c.
 - CAPTAIN BOYNTON**—A beautiful lavender. 3 for 15c; 10 for 40c.
 - BETTY NUTHALL**—Coral pink; extra good. 3 for 15c; 10 for 40c.
 - FLAMING SWORD**—Striking red; fine for cutting. 3 for 15c; 10 for 40c.
- 3 each of above 6 varieties, a 90c value, for 72c.

SPECIAL GLADIOLA OFFER

PICARDY—A choice prize winner. Clear pink tinted salmon, with red throat. Giant blooming size bulbs. 3 for 29c; 10 for 89c.

TIGRIDIA

SHELL FLOWER OF MEXICO or **SACRED LILY**—Gorgeously colored cup-shaped flowers tripetaled with unusual color blends. Long blooming period. Requires same care as Gladiolus. Mixed bulbs 16c each; 3 for 39c; 6 for 75c; 12 for \$1.50.

LILY-OF-THE-VALLEY

Small, sweet, dainty creamy-white bells. They spread from the roots. Excellent to force and grow in cool shady locations. 3 for 30c; 6 for 50c; 12 for 80c.

HARDY WATER LILIES

The best free blooming varieties. We are not sure of the names of the varieties but have discarded all but the hardiest free blooming variety of each color listed. Large blooming size plants. Plant in tubs with rich soil so crown is even with top of dirt. If there are fish in the pool cover dirt 2 or 3 inches with gravel. Choice red, white, two-tone or salmon, pink, and yellow. \$1.00 each; 2 for \$1.80. Collection one each of 5 colors, \$5.00 value, for \$3.95.

TUBEROSES

EXCELSIOR PEARL—Long compact spikes of double waxy white flowers. Very fragrant. 10c each; 3 for 22c; 6 for 39c; 12 for 69c.



Elephant Ear

CANNAS

SIX FAVORITE VARIETIES

- CITY OF PORTLAND**—Glowing pink color. 3 to 4 ft. tall. A favorite variety.
- YELLOW KING HUMBERT**—Golden yellow, blotched red. 4 to 5 ft. A strikingly colored variety.
- CALIFORNIA**—Very pretty orange; good bloomer.
- GLADIATOR**—Yellow flowers with red dots; large heads.
- THE PRESIDENT**—Massive flower heads; glowing scarlet color.
- WYOMING**—Bronze foliage; mammoth size; orange flowers.
 3 for 29c 6 for 50c 12 for 90c

DAHLIAS

- JERSEY BEAUTY**—True pink; always good. 25c each; 4 for 89c.
- MRS. I. DE VER WARNER**—Large lavender. 22c each; 4 for 75c.
- CHEMARS EUREKA**—Pure pearl white. 35c each; 4 for 98c.
- JERSEY'S BEACON**—Chinese scarlet and buff. 25c each; 4 for 89c.
- JANE COWL**—Bronze, buff and old gold. 25c each; 4 for 89c.

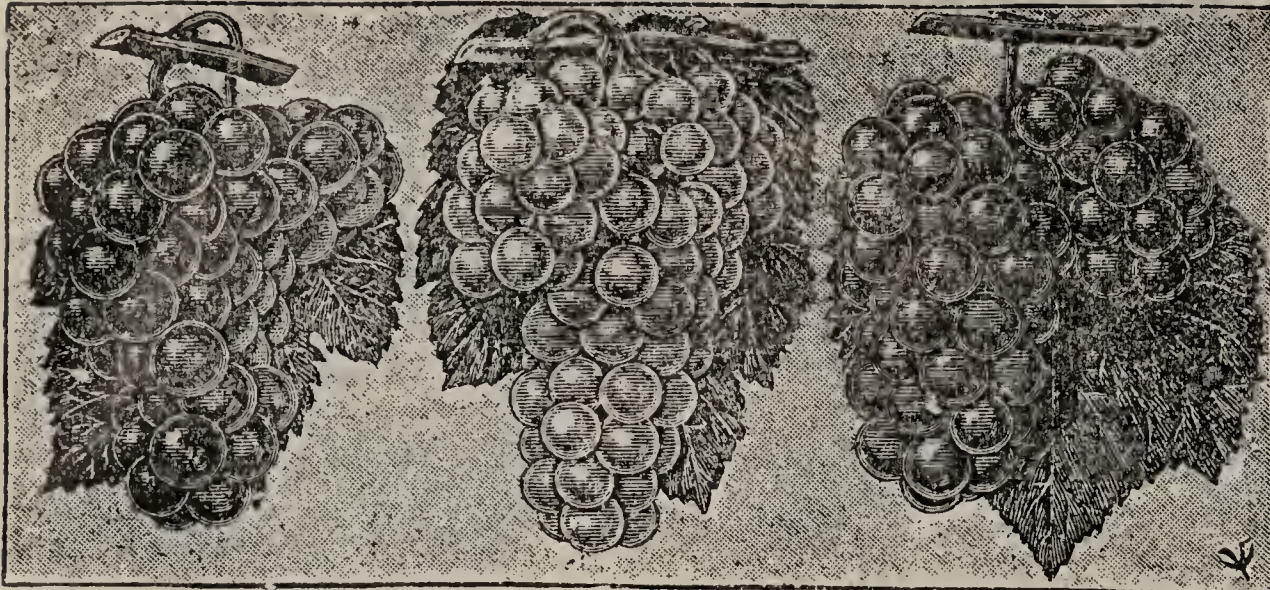
A well balanced color collection of 5 favorite prize winning varieties. One each individually labeled, a \$1.35 value, all for 98c.

ELEPHANT EAR

CALADIUM—Mammoth leaves; rapid growing; very ornamental. Store bulbs each fall in dry sand where they cannot freeze. No. 1 bulbs 30c each; 3 for 75c.

HARDY FERNS

(See page 5)



Fredonia

Niagara

Agawam

FREDONIA

Considered the best of the newer varieties. Federal and State authorities alike highly recommend for home and commercial plantings. It will eventually take the place of the Concord as it is fully 10 days earlier with larger bunches and blue berries. Supply limited. Order at once. Save money on this new grape at 30c each; 4 for \$1.00.

SAGE

HOLT'S MAMMOTH—Aromatic and of a good quality. Easy to grow. A plant all gardens should have because of its many seasoning uses. 17c each; 3 for 40c; 12 for \$1.50.



Asparagus

AGAWAM—Large compact bunches of beautiful red berries. Very productive and the best of its class.

NIAGARA—The most popular and best white grape of high quality with large bunches and berries.

YOUNGBERRIES

Bears very heavily but the fruit is easy to handle, is very attractive, ships, keeps, and cans well. Easily grown. Berries are very large of dark wine color and are highly flavored.

	Each	6	12	25
New				
Thornless	27c	\$1.14	\$1.87	\$2.98
Common	12c	.52	.98	\$1.65

HORSERADISH

Horseradish is very easily grown in the home garden. You will prefer the fresh home-grown product to that sold over the counter. A half dozen roots are sufficient for the average family. 10c each; 6 for 50c.

ASPARAGUS

WASHINGTON—A new rust resistant Asparagus. As a standard variety for the production of fancy Asparagus for home or market, it stands ahead of all others in size, vigor, tenderness, and quality. 2 year roots 10 for 30c; 25 for 60c; 100 for \$1.50; 1000 for \$9.00.

PIE PLANT or RHUBARB

Leaf stalks long, large, tender, and juicy. Early cellar-grown rhubarb with beautiful pink, tender stalks may be enjoyed in March by anyone who will devote a little time to it. 10c each; 6 for 50c; 10 for 75c; 25 plants or more 7c each.

GOOSEBERRIES

Useful for cooking and canning. They are especially priced at 30c each; 3 for 79c; 10 for \$2.45; 25 or more 20c each.

DOWNING—Large light green berries with a smooth skin and a good producer of high quality.

HOUGHTON—A good yielder of pale red fruit.

GRAPES for profit

Grapes can be depended upon every year. They are adapted to almost every soil, of easy culture and do not require a large investment. Write for special quantity prices.

All grapes except where noted are 15c each; 5 for 65c; 25 for \$2.75.

MOORES EARLY—A good reliable black grape. As good as Concord, but ripens a week earlier. Profitable because of its earlier ripening.

CATAWBA—Best red variety and the last to ripen. Excellent for jams and jellies.

DELAWARE—Small compact red bunches of delicious berries. Excellent for desserts and eating.

IVES—A small jet-black variety with a high reputation for excellent red wines.

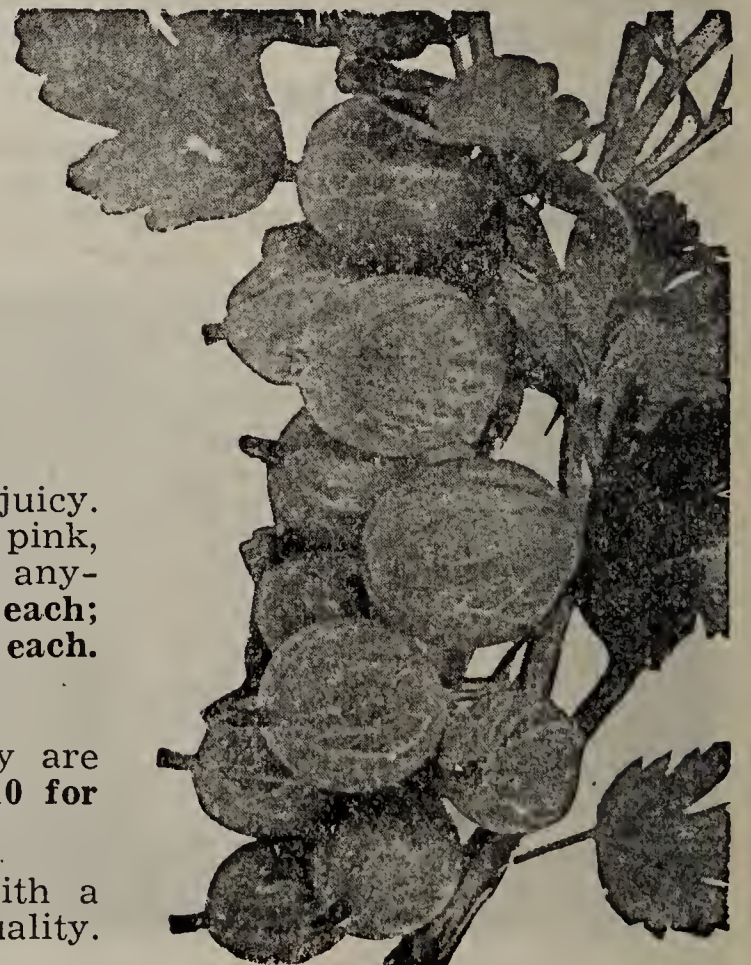
CONCORD—The most popular grape in the United States. More Concords are in bearing now than any other variety. Price 12c each; 5 for 47c; 25 for \$2.25.

SPECIAL

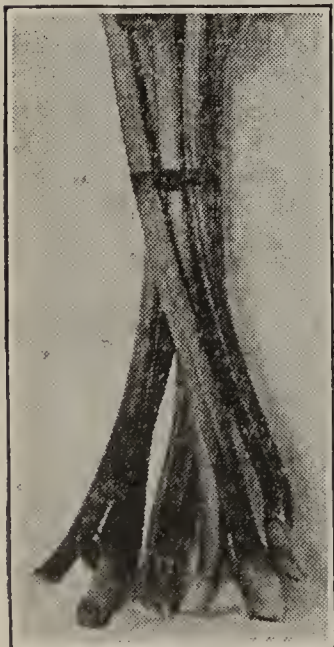
25 Asparagus	-	-	-	.60
10 Rhubarb	-	-	-	.75

Value \$1.35

All prepaid for \$1.07



Gooseberries



Pie Plant

MAKE and SAVE MONEY
BY PLANTING OUR SMALL FRUITS

RASPBERRIES

CUMBERLAND—The largest of all black caps; firm and a good shipper, and one of the most profitable as a market berry. Price, 25 for 95c; 50 for \$1.68; 100 for \$2.98; over 250 plants 2c each.

LATHAM—Has proved to be the very best of all the red sorts, for most sections. Splendid strong growing kind, producing immense quantities of bright red extra large berries. Price, 25 for \$1.00; 50 for \$1.82; 100 for \$3.25; over 100 plants 3c each.

CHIEF—New variety. Ripens earlier than Latham, greater hardiness, more disease resistant, bears more abundantly, fruit very red. One of the most profitable. Price, 25 for \$1.00; 50 for \$1.82; 100 for \$3.25; over 100 plants 3c each.



Raspberries

BLACKBERRIES

ELDORADO—A comparatively new variety, and has proven to be the best of the blackberries under cultivation. Very hardy. Fruit very large, jet-black, good shipper, good quality. Great producer. Price, 12 for 53c; 25 for 95c; 50 for \$1.68; 100 for \$3.15.

DEWBERRIES

LUCRETIA—Fruit always sells at a premium with the commission men or on the open market. Fruit of highest quality and very large, often from one to two inches long and one inch in diameter. Perfectly hardy and a great bearer. Price, 25 for 95c; 50 for \$1.68; 100 for \$2.98; over 250 plants 2c each.

SPECIAL		
25 Cumberland	- -	.95
25 Chief or Latham	- -	1.00
(your choice)		1.00
		Value \$1.95
All prepaid for \$1.69		

STRAWBERRIES

DORSETT—A new berry originated by United States Department of Agriculture. Superior to Premier. Scarlet red berries of finest quality. Firm. A good producer. 25 for 45c; 100 for \$1.15; 250 for \$2.60; 1000 for \$9.00.

FAIRFAX—Like Dorsett was introduced by the United States Department of Agriculture. Similar to the above with the berries a darker red. Also a firm berry and a good producer. 25 for 45c; 100 for \$1.15; 250 for \$2.60; 1000 for \$9.00.

PREMIER—Is the earliest worthwhile strawberry. A heavy yielder and always in great demand. 25 for 35c; 100 for \$1.00; 250 for \$2.25; 1000 for \$7.75.

SENATOR DUNLAP—Has unusually long fruiting season. Bears immense quantities of large, rich, fine flavored, dark red berries. 25 for 35c; 100 for \$1.00; 250 for \$2.25; 1000 for \$7.75.

MASTODON—The best of the everbearing strawberries. Will start to fruit three months after planting and continue to bear heavily until frost. The Mastodon has proven far superior to other everbearing varieties in many ways. Fruit is almost double the size of common everbearers. 25 for 60c; 100 for \$1.90; 250 for \$3.95; 1000 for \$12.00.

CURRENTS

NEW RED LAKE—Originating in the far north, this new variety has been tested in many different localities with outstanding and favorable results. It promises to replace other varieties for commercial and home use, because of its vigor and larger red fruit. Order early as supply is limited. 35c each; 3 for \$1.00; 10 for \$2.75.

WILDER—A heavy yielding variety with excellent quality fruit in large clusters. 25c each; 3 for 67c; 10 for \$1.98.



Strawberries



Currants

FRUIT TREES

Plant Spring Hill's Northern Grown, True To Name Stock. It will make you money. Every home and farm should plant some fruit trees for beauty and profit.



Rome Beauty Apple

ROME BEAUTY—A great profit maker. Blooms late and a sure cropper. Fruit red striped and of good quality. One of the best keepers.

BALDWIN—The apple of great popularity. A good producer and keeper. Bright red winter apple of high quality.

DELICIOUS—A large beautiful deep red variety of unsurpassed quality. The leading commercial variety. Everybody should plant a Delicious.

GRIMES GOLDEN—The leading and most widely planted yellow apple. The rich aromatic golden fruit of medium size is fine for eating and cooking.

APPLE

EARLY HARVEST—Large early yellow apple. Prized by the housewife for desserts and culinary purposes.

YELLOW TRANSPARENT—The money-maker of the early varieties. A good yellow apple of fine quality for home or commercial use.

McINTOSH—A beautiful red variety ripening in the fall. Unsurpassed for its high quality.

WEALTHY—Ripens in mid-season. The outstanding variety and money-maker for its season. Heavy producer of brilliant red fruit marked with narrow stripes.

JONATHAN—A general favorite with beautiful large red fruit, produced abundantly in late fall. A leading home and commercial variety of excellent quality.

STAYMAN'S WINESAP—The champion of all Winesaps. Extra large red fruit with juicy yellow flesh. Fine for eating, cooking, or keeping.

PRICE OF APPLE

Height	Each	5 Trees	10 Trees
2—3 feet	\$.50	\$1.75	\$3.00
3—4 feet60	2.75	5.00
4—6 feet70	3.25	6.00

**C H E R R Y
LARGE SOUR CHERRY**

MONTMORENCY—The most popular cherry. A large late productive variety of high quality.

EARLY RICHMOND—The best early cherry. Fine for market and canning. Not so acid as Montmorency.

PRICE OF SOUR CHERRY

Height	Each	3 Trees	10 Trees
3—4 feet	\$.50	\$1.40	\$4.50
4—6 feet65	1.75	5.95

SWEET CHERRY

BRASSINGTON—The earliest semi-sweet cherry. A cross between the sour and sweet varieties, having the bearing qualities of the sour with the size, flavor, and color of the sweet. A new cherry highly recommended.

BLACK TARTARIAN—Large, firm, delicious, glossy, dark red fruit. A good yielder and one of the best all round varieties

ROYAL ANN—A large yellow cherry with pink cheek. The most popular variety for commercial and home canning.

PRICE OF SWEET CHERRY

Height	Each	3 Trees	10 Trees
3—4 feet	\$.60	\$1.65	\$5.45
4—6 feet80	2.30	7.45

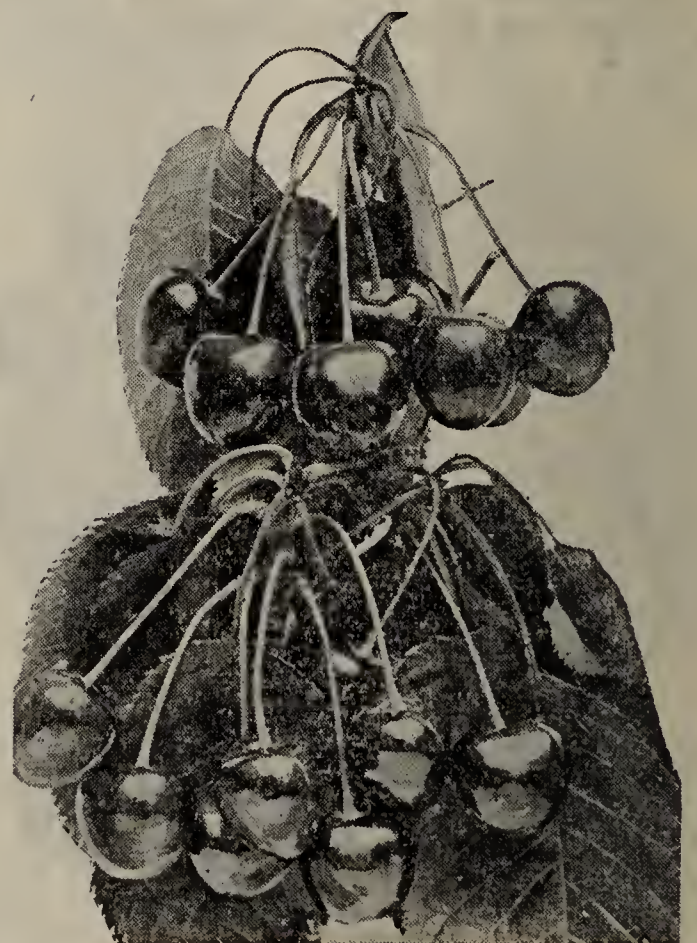
QUINCE

ORANGE or APPLE—The most popular variety. Large fruit of excellent color and quality. Bears when young. 1 year 3-4 ft. plants 67c each; 3 for \$1.80.

APRICOT

Hardy

An imported variety; hardy as peach trees. Bears young, grows fast, and makes an attractive tree very beautiful in bloom. 3-4 ft. 49c each; 3 for \$1.37.



Early Richmond Cherry

FRUIT TREES

PLANT SPRING HILL'S STOCK FOR PROFIT

PEACH

BELLE OF GEORGIA—Considered the best all round home and orchard variety. White flesh; excellent flavor. Very prolific, highly colored freestone.

ELBERTA—The standard variety. A large, juicy, highly flavored, prolific, firm-fleshed peach. Highly blushed.

EARLY ELBERTA—Same as above but about 2 to 3 weeks earlier.

J. H. HALE—A choice variety and money-maker. Earlier than Elberta, also superior in color, size, and flavor.

LATE CRAWFORD—Unsurpassed for a large late yellow freestone. Bears an abundance of beautiful golden peaches in late September.

GOLDEN JUBILEE—The best early yellow freestone. High quality; excellent color and flavor.



Elberta Peach

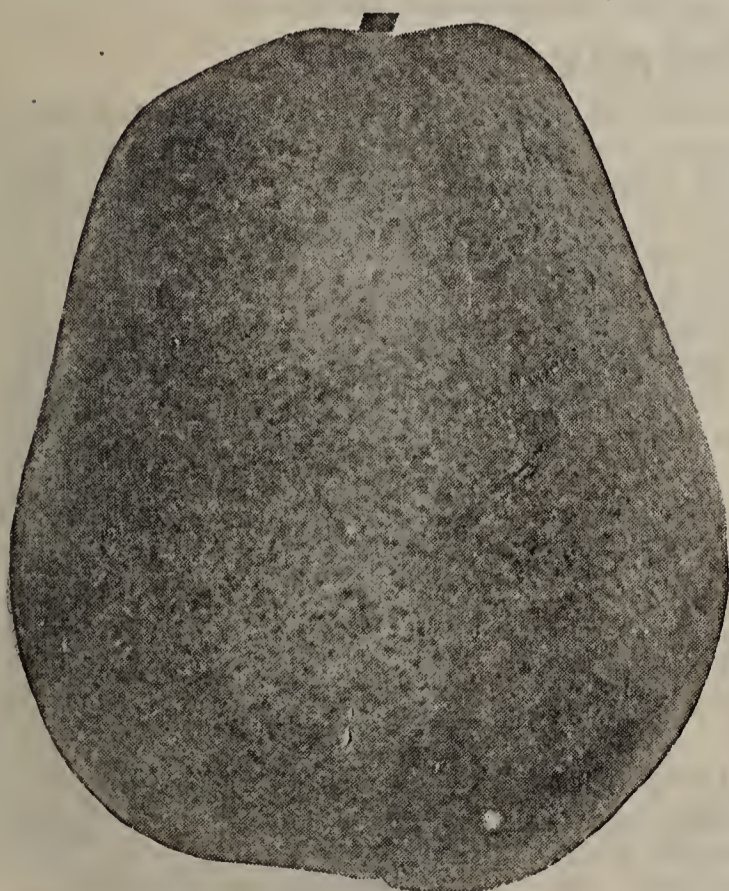
PRICE OF PEACH

Height	Each	5 Trees	10 Trees
2—3 feet	\$.30	\$1.25	\$2.25
3—4 feet	.40	1.75	3.25
4—5 feet	.60	2.75	5.00

PEACH TREE SPECIAL

Thrifty 18 to 24 inch trees

	Belle of Georgia	J. H. Hale	Elberta
3 Trees		54c
5 Trees		89c
10 Trees		\$1.49



Kieffer Pear

PLUM

ABUNDANCE—A large yellow plum overspread with red. A good money-maker, hardy, and productive.

BURBANK—Tree bears young. A heavy yielder of large, tender, juicy cherry-red fruit.

ABUNDANCE AND BURBANK PRICES

2 to 3 ft. trees 35c each; 10 for \$2.95
 3 to 4 ft. trees 45c each; 10 for 3.95

GERMAN PRUNE PLUM

Large dark blue. One of the best for canning.

2 to 3 ft. trees 50c each; 5 for \$2.25
 3 to 4 ft. trees 65c each; 5 for 3.00
 4 to 5 ft. trees 80c each; 5 for 3.75

PEAR

BARTLETT—Most popular variety. Large, highly colored; well flavored and productive. Fine for eating and canning.

SECKEL—The well known sugar pear. High quality; very popular for desserts and pickling.

KIEFFER—Dependable producer of large fine looking pears with good keeping and shipping qualities.

PRICE OF PEAR

Height	Each	5 Trees	10 Trees
2—3 feet	\$.50	\$2.25	\$4.25
3—4 feet	.65	3.00	5.75
4—5 feet	.80	3.75	6.90

SHRUBS

Heavy 2 and 3 year old plants. Many new and rare varieties at big savings. Compare our prices and quality.

FLOWERING ALMOND

A handsome old fashioned shrub. Double, bright pink flowers on every twig in the spring before the leaves appear. 2 yr. plants 45c each; 2 for 80c; special 2½ inch pot plants, 12 to 15 in. 27c each; 3 for 60c.

COTONEASTER

HORIZONTALIS—A low, spreading, horizontal, evergreen shrub, with glossy leaves. Covered with numerous flowers in the spring, followed with bright red foliage and berries in the fall. Very attractive. 10 to 12 inch plants 75c each; 3 for \$1.95.

A NEW SHRUB

EUONYMUS VEGETUS—A hardy, dense evergreen shrub which holds its glossy green leaves throughout the year. Bears beautiful berries like the common Bittersweet. 2 yr. old plants 45c each; 2 for 75c.

PRUNUS

(Purple Leaved Plums)

PRUNUS CISTENA—A handsome little tree with blood red foliage all season. Masses of delicate white flowers in early spring. Without question the best dwarf red-foliaged shrub or tree. Specially priced. 18 to 24 inch plants 50c each; 3 for \$1.25.

PRUNUS NEWPORT—An improved strain of Purple Plum. Foliage and flowers the same as Prunus Cistena but grows taller. 2 to 3 ft. plants 50c each; 3 for \$1.25.



Rhus Cotinus

SMOKE TREE

RHUS COTINUS—Unique spreading tree-like shrub, with large leaves. Overhung in midsummer by cloudlike masses of very light, mistlike flowers, having the appearance of smoke. Foliage changing to a brilliant shade of red and yellow in autumn. 18 to 24 inch plants 40c each; 3 for \$1.00.

VIBURNUM

AMERICANA—Same habit of growth as High Bush Cranberry, berries being red and quite large. Attracts birds. 15 to 18 inch plants 25c each; 5 for \$1.00.

FOR THE BIRDS

What is more fitting than to plant berry-producing shrubs for the birds? The following plants are especially attractive to birds.

DOWNY HAWTHORNE—Bright green leaves with creamy white flowers, followed with scarlet edible fruit. 15 to 18 inch plants 25c each; 5 for \$1.00.

RHAMNUS FRANGULA—Beautiful glossy foliage with black berries. 15 to 18 inch plants 25c each; 5 for \$1.00.

LONICERA MAACKI—An unusual shrub of graceful habit. Flowers same as other Honeysuckle, followed with red berries in the fall. 15 to 18 inch plants 25c each; 5 for \$1.00.

SNOWBERRY

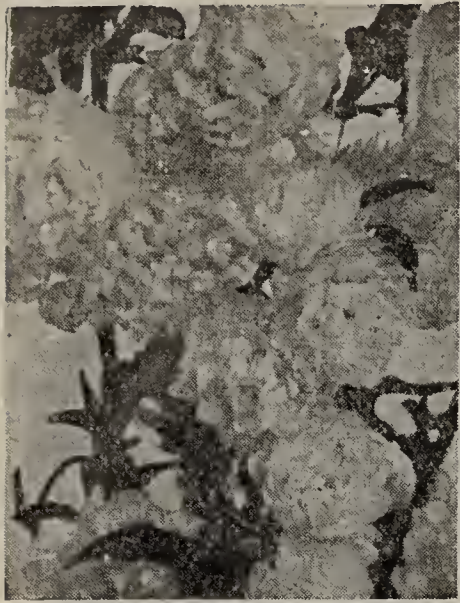
WHITE—A hardy shrub excellent for massing in the lower parts of a bed or border. Rose-colored flowers, appearing in July and August followed with white waxy-like berries which remain until late in the autumn. 2 to 3 ft. plants 40c each; 2 for 75c.

RED—A slender arching shrub, very showy in autumn when covered with bunches of bright, coral-pink small fruits which hang on nearly all winter. 2 to 3 ft. plants 40c each; 2 for 75c.

BUTTERFLY BUSH

ILE DE FRANCE—A new French shrub much superior to the old common varieties. The outstanding qualities of this Butterfly Bush are the rich purple color and the large size of the flower spikes. Covered with bloom from early July until late fall. Attractive to butterflies. 50c each; 2 for 90c.

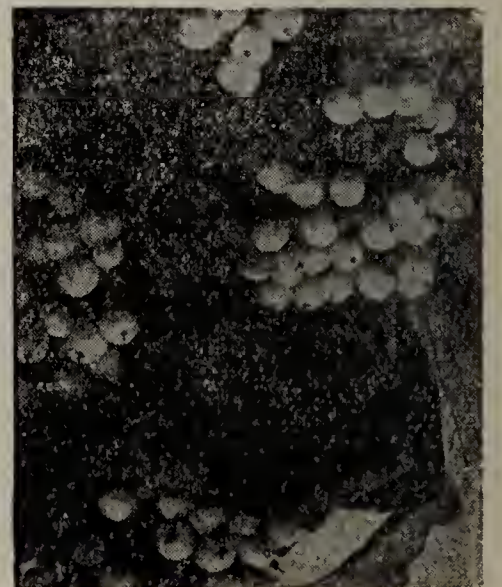
MAGNIFICA or SUMMER LILAC—Will bloom the first season; the blossoms are borne on long graceful stems which terminate in tapering panicles of lilac-colored flowers. 35c each; 4 for \$1.00.



Flowering Almond



Butterfly Bush



White Snowberry

SHRUBS

2 AND 3 YEARS OLD

WEIGELIA



Weigelia

ROSEA—A choice vigorous and popular shrub, which yields an immense number of deep pink trumpet-shaped flowers in June, and bears a scattering of blossoms the rest of the season. 2 to 3 ft. plants **40c each; 3 for \$1.00.**

DWARF VARIEGATA—The leaves of this variety are green and broadly margined in creamy white. The flowers are rosy-pink. Used extensively in foundation planting for foliage contrast. Grows 2 to 3 ft. tall. 12 to 18 inch plants **40c each; 2 for 75c.**

EVA RATHKE—A very distinct shrub, extremely attractive with its deep carmine-red blooms all season. Erect grower; everblooming. 18 to 24 in. plants **50c each; 2 for 90c.**

SPIREA

DWARF GOLDEN (Physocarpus Monogymus)—Recently introduced dwarf shrub noted principally for its fine foliage; symmetrical habit of growth; hardiness and its ability to adapt itself to poor soils and growing conditions. Thrives in sun or shade. Has clusters of creamy yellow flowers. 12 to 15 inch field grown plants **40c each; 2 for 75c.**

ANTHONY WATERER—A compact low-growing shrub with dense foliage and bright pink flowers throughout the season. This variety is used more for foundation plantings or low borders than any other dwarf shrub. 12 to 18 inch plants **30c each; 4 for \$1.00.**



SPIREA A. WATERER

KOREAN (New)—A new introduction, similar to Van Houttei in character; the flowers being larger and produced in dome-shaped clusters. 18 to 24 inch plants **35c each; 3 for 90c.**

SPIREA SPECIAL

VAN HOUTTEI—This is the variety which is commonly called Bridal Wreath. The flowers are in flat clusters usually an inch or more across produced on spreading, pendulant branches often drooping to the ground. In full bloom they are a mass of white and never fail to attract attention. Indispensable in plantings. 3 to 4 ft. plants **27c each; 3 for 69c; 5 for 98c; 10 for \$1.60.**

SNOWBALL (Viburnum)

COMMON (Vib. Sterilis)—This shrub needs no description as it will always be the favorite in every garden. Very decorative with its large white flowers in May and bright foliage in the fall. 18 to 24 inch plants **35c each; 3 for \$1.00; 2 to 3 ft. plants 40c each; 2 for 75c.**

WAYFARING TREE (Vib. Lantana)—This hardy shrub is especially suitable for dry locations and limestone soil. The large, flat, white flower clusters are followed by red fruits. 18 to 24 inch plants **35c each; 3 for \$1.00; 2 to 3 ft. plants 40c each; 2 for 75c.**

HIGH BUSH CRANBERRY (Vib. Opulus)—A handsome shrub attaining a height of 12 feet with rather smooth, light branches. Pure white flowers, followed by decorative fruits which begin to color by the end of July and remain on the branches until the following spring. 18 to 24 inch plants **30c each; 4 for \$1.00; 2 to 3 ft. plants 35c each; 3 for \$1.00.**



Sweet Scented Shrub

CALYCANTHUS

SWEET SCENTED SHRUB—A unique shrub attaining a height of 6 feet, clothing its straight, strong, reddish brown branches with large glossy leaves, from the axils of which spring odd, double, spicily fragrant flowers of chocolate-red. 18 to 24 inch plants **40c each; 2 for 70c.**

PUSSY WILLOW

Not the wild Pussy Willow but a cultivated variety which has become most popular. Enjoy these dainty silvery flowers every winter. A beautiful round shrub in summer. Cut the ends of the branches next January or February, place them indoors in a vase of water and watch them unfold their large catkins of silvery pink. 2 to 3 ft. plants **40c each; 3 for \$1.00.**



Pussy Willow

SHRUBS

CYDONIA

(Flowering Quince)

FIRE BUSH—Common garden form with spreading, spiny branches. The orange-red flowers appear before the leaves and are followed by globular fruits. 18 to 24 inch plants 40c each; 2 for 75c.

NEW CYDONIA (Simmonsii)—A shrub with low and short spreading branches. Flowers are a very dark red, followed with fruit which is very fragrant. Supply limited. 12 to 15 inch plants 45c each; 2 for 79c.

HIGH BUSH BLUEBERRY

RHAMNUS FRANGULA—Very hardy. Glossy foliage, white flowers, followed by highly ornamental red berries. Excellent for birds. Two year old plants, 18 to 24 in. An outstanding value. 24c each; 3 for 57c.

BEAUTY BERRY

CALLICARPA JAPONICA—A new hardy shrub from Manchuria; pink flowers, followed by bright lilac berries covering the stems like beads. 12 to 15 inch plants 35c each; 3 for \$1.00.



Cydonia

CRATAEGUS

DOWNY HAWTHORNE

—A handsome dwarf tree with bright green leaves and showy creamy white flowers, followed with scarlet edible fruit. Fine for mass planting. 3 to 4 ft. plants 60c each; 3 for \$1.00.

ENGLISH HAWTHORNE

—Pure white, very attractive double flowers. Beautiful in foliage and fruit in the autumn. 2 to 3 ft. plants 50c; 3 for \$1.25.

SEEDS

Pages 28-29



Philadelphus

OLD FASHIONED SNOWBALL

This is the well-known Snowball of the old fashioned gardens. Besides the large snow white flowers in May, the foliage is decorative and assumes a bright color in the autumn. 18 to 24 inch plants 35c each; 3 for \$1.00; 2 to 3 ft. plants 40c each; 2 for 75c.

JAPANESE ROSE SHRUB

KERRIA OR GLOBE FLOWER—One of the first shrubs brought from Japan. It grows from four to eight feet high and as broad as high. Very attractive throughout the year. Not quite hardy in the northern states. 18 to 24 inch plants 50c each; 2 for 95c.

EVERGREEN OREGON HOLLYGRAPE HOLLY LEAF MAHONIA—A beautiful evergreen shrub with smooth shiny holly-like leaves; bright yellow flower clusters in May followed with bunches of blue berries resembling grapes. The leaf color varies. Bush plants 15 to 18 inches 50 each; 3 for \$1.00.

PHILADELPHUS

VIRGINAL—Large semi-double flowers throughout the season. This is a new and wonderful addition to the Mock Orange family. One of the most beautiful shrubs grown. 2 to 3 ft. plants 40c each; 2 for 75c.

GOLDEN—Dense yellow foliage with fragrant white blooms. A beautiful shrub growing 3 ft. in height. 12 to 18 inch plants 35c each; 2 for 60c.

GRANDIFLORA—Large flowering shrub, usually upright and very vigorous. Flowers slightly fragrant. 2 to 3 ft. plants 35c each; 2 for 60c.

LEMOINE—Dwarf Mock Orange. Graceful shrub with slender branches of compact growth. Attractive small glossy leaves and abundance of blossoms in 3 to 7 inch clusters, very fragrant. 18 to 24 inch plants 40c each.



Oregon Hollygrape



SHRUBS

2 AND 3 YEARS OLD

PINK FLOWERING LOCUST

This shrub is valued for its elegant clusters of rose-colored flowers, which expand toward the last of May and continue to bloom for some time. The branches resemble the Moss Rose. 2 to 3 ft. plants 35c each; 4 for \$1.00.

DWARF SPIREA

Flowers bright pink and are borne in full flat clusters. Very valuable for its dwarf habit. Excellent for edging in front of shrubbery. 12 to 18 inch plants 35c each; 3 for 90c.

FORSYTHIA

FORTUNEI—Shrub of graceful habit, every twig densely covered with bright yellow flowers in early spring. 2 to 3 ft. plants 40c each; 3 for 90c.

SPECTABILIS—Showiest of all Forsythia. Especially dense flowering habit with deep yellow flowers. 2 to 3 ft. plants 40c each; 3 for 90c.

WEeping—Highly ornamental; branches often drooping on the ground. The golden yellow flowers appear in early spring. Fine for planting in groups or on banks. 2 to 3 ft. plants 40c each; 2 for 75c.



Forsythia



Flowering Locust

FORSYTHIA SPECIALS

NEW DWARF—This new Forsythia grows about 3 ft. high and is of upright habit; will not spread or droop like other varieties. Very showy in the spring with masses of yellow flowers and valuable for a border plant. 12 to 15 inch plants 30c each; 3 for 75c.

4 FORSYTHIA \$1.07

One each of the varieties listed on this page, \$1.50 Value
FOR \$1.07

SPECIALS PAGE 10

Old — LILACS — New

PURPLE—This Lilac is the old favorite and one of the best. 18 to 24 inch plants 35c each; 3 for 90c.

PERSIAN—A graceful shrub growing 8 to 10 ft. in height. Fragrant light purple flowers in large clusters. 2 to 3 ft. plants 40c each; 3 for \$1.00.

NEW VARIETIES

We consider the following French Lilacs the best.

BELLE DE NANCY—Double rose flowers with whitish center.

CHARLES X—Single flowers of a rich reddish purple.

EDWARD BOSSIER—Single dark bluish purple flowers.

PASCAL—Single purple flowers expanding to violet.

VESTALE—Single yellowish white flowers.

18 to 24 inch plants 40c each; 3 for \$1.00.

Mixed Colors—18 to 24 inch plants 30c each; 4 for \$1.00.

THREE NEW HARDY SHRUBS

We are only offering these new shrubs in 2 year mailing size. They have grown 1 year in the field and are thrifty branched plants.

COTONEASTER APICULATA—10 to 12 inch field grown plants. 40c each.

LONICERA SARAGANTHA—A new bush Honeysuckle. 40c each.

DIERVILLA VENUSTA—A new Weigelia. Golden yellow flowers. 40c each.



SHRUBS

TAMARIX

AFRICANA—An upright grower with slender branches covered with light green feathery foliage. Blooms in May. 18 to 24 inch plants 35c each; 3 for \$1.00; 2 to 3 ft. plants 40c each; 2 for 75c.

HISPIDA—A graceful shrub with bluish green foliage and trusses of pink flowers. 2 to 3 ft. plants 40c each; 2 for 75c.

HYPERICUM

A woody, stiff, dense shrub with a top often globular like a small tree. Leaves leathery light green with golden yellow flowers. 12 to 18 inch plants 40c each; 2 for 75c.

DEVIL'S WALKING STICK

A shrub or small tree with stout, prickly stems, large leaves, and enormous clusters of flowers which give it a subtropical appearance. 45c each; 2 for 80c.

RUSSIAN OLIVE

ELEAGNUS ANGUSTIFOLIA— Attractive foliage of a remarkable silvery hue; yellow flowers and attractive silvery olive shaped fruits. A rapid tall growing plant suitable for background and hedge planting. Very hardy. 12 to 15 inch plants 3 for 40c.



Tamarix

DOGWOOD-CORNUS

RED TWIGGED—Grows 10 to 12 ft. high. Has purple or dark blood-red branches and greenish white flowers. Clusters of blue berries that will attract the birds. 18 to 24 inch plants 40c each; 2 for 75c.

YELLOW TWIGGED—Bright yellow bark in winter which makes it very effective when planted with red-barked varieties. Clusters of creamy white berries. 2 to 3 ft plants 40c each; 2 for 75c.

WHITE FLOWERING (Florida Alba)—Large white flowers in early spring before the foliage appears. Dwarf trees or shrubs grow 15 ft. to 20 ft. tall. 2 to 3 ft. plants 45c each; 2 for 80c.

RED FLOWERING DOGWOOD—See inside front cover for description and price. Also on page 12.

ABELIA

A shrub that is classed as a semi-broad-leaved evergreen with leaves of a glossy dark green color. The bloom resembles that of the Kolkwitzia which is pictured opposite. Long blooming season. 2 to 3 ft. plants 45c each; 2 for 80c.

KOLKWITZIA—BEAUTY BUSH

A graceful arching shrub with center almost upright. The flowers are produced along the whole length of the branches in clusters at the ends of short, leafy shoots. They are tubular with a gaping mouth, deep pink without, stained with yellow brown on the lower throat and lip. The graceful habit of the plant, its free flowering qualities, combined with perfect hardiness, make it one of the most beautiful as well as useful shrubs that China has given to this country. 2 to 3 ft. plants 45c each; 2 for 80c.

SIBERIAN PEA TREE

Hardest shrub or small tree known. Planted almost exclusively in Canada for windbreaks and hedges. Stands trimming. This tree is covered with dainty yellow sweet pea shaped flowers in early spring. 18 to 24 inch plants 22c each; 3 for 50c.



Althea

ALTHEA

One of the most beautiful of the flowering hedges.

BOULE DE FEU—Double red flowers blooming in August and September.

JEANNE D'ARC— Double white flowers.

LADY STANLEY—Delicate double rose-pink flowers.

18 to 24 inch plants 35c each; 4 for \$1.00.

CORK BARK—EUONYMUS

An attractive ornamental shrub growing to 8 ft. in height. Fine for specimen planting or massing. Very effective in the fall. 2 to 3 ft. plants 45c each; 2 for 80c.



Kolkwitzia

Shrubs

2 AND 3 YEARS OLD



DEUTZIA

PRIDE OF ROCHESTER—An erect growing shrub, highly prized for the beautiful clusters of large double white flowers in May. The best of the Deutzias. 2 to 3 ft. plants **40c each; 2 for 75c.**



Deutzia (Pride of Rochester)

SPECIALS

DESMODIUM PENDULIFORUM—Half-shrub, the canes of each season's growth usually winter-killed, but produces new canes each spring, forming a heavy thick shrub with long drooping branches, covered with lavender pea-shaped flowers. 2 yr. plants **35c each; 3 for \$1.00.**

SAMBUCUS CANADENSIS (Elder)—A shrub growing to 6 feet or more in height with bright green foliage and fragrant white flowers in dense masses in June and July, followed by black edible berries much prized for wine and pastries. An ornamental shrub throughout the season. Mail order size plants **25c each; 3 for 65c.**

HYDRANGEA P. G.

A magnificent landscape shrub. This plant is absolutely hardy, will grow in almost any soil, and generally blooms the first year planted. The large conical-shaped flowers are white changing to pink in the fall. 18 to 24 inch plants **40c each; 3 for \$1.00.**



HYDRANGEA

HYDRANGEA A. G.

HILLS OF SNOW—The flowers are similar to the Old Fashioned Snowball in appearance; being conspicuously white and imposing. A very showy variety, excellent for borders. 18 to 24 inch plants **40c each; 3 for \$1.00.**

CUT LEAF SUMAC

This shrub has beautiful fern-like foliage which turns a dazzling red in the fall. The bright red flower clusters or seeds persist in hanging on all winter. **30c each; 3 for 80c.**



Barberry

BUSH HONEYSUCKLE (Lonicera)

MORROWI—A very decorative shrub. The beautiful pure white flowers appear in May or June and are followed by red berries which remain until late autumn. 2 to 3 ft. plants **40c each; 3 for \$1.00.**

TARTARICA ROSEA—This is one of the old-time favorite shrubs with rose-pink flowers. Beautiful foliage all year. 2 to 3 ft. plants **40c each; 3 for \$1.00.**

BARBERRY

GREEN LEAVED—Grows low and dense, making it very adaptable for planting along walks and borders. Small flowers followed by red berries which hang on through the winter months. 12 to 18 inch plants **20c each; 6 for \$1.00; 18 to 24 inch plants 30c each; 4 for \$1.00.**

RED LEAVED—One of the finest shrubs introduced in recent years. Bright red foliage in spring and summer, deepening to a dark crimson in the fall. Should have full sunlight to bring out its bright coloring. 12 to 18 inch plants **25c each; 5 for \$1.00; 19 to 24 inch plants 35c each; 3 for \$1.00.**

GREEN LEAVED BARBERRY SPECIAL—These seedling plants which we are offering as specials should not be confused with the above field grown stock. Will make excellent hedge plants or if planted in the garden and cultivated can be used anywhere. 12 to 15 inch plants **25 for \$2.00; 50 for \$3.50; 100 for \$6.50.**

FLOWER

SEEDS



Packed By Saunder's Seed House

Grow your own favorite flowers by planting some of the old varieties as well as the newer ones. Have beautiful cut flowers for the house. **ALL FLOWER SEEDS PREPAID.**

- ASTERS**—Fine tall, mixed varieties. Pkt. 10c.
- CALENDULA**—Mixed. One of the showiest of the annuals. Pkt. 5c.
- COSMOS**—Mixed colors; early flowering. Fast growing annual. Pkt. 5c.
- DWARF NASTURTIUM**—Best mixture, composed of the large-flowered sorts in brilliant colors of every shade. Pkt. 5c; oz. 10c.
- GOLDEN GLEAM NASTURTIUM**—Semi-dwarf. Large, double, sweet-scented, golden yellow flowers. Pkt. 5c; oz. 10c.
- TALL OR CLIMBING NASTURTIUM**—A wonderful mixture of rich colors are found in this variety. Pkt. 5c; oz. 10c.
- SWEET PEAS**—Grandiflora mixed. A peerless mixture of varieties and absolutely the finest that can be made. Pkt. 5c; oz. 10c.

- FOUR O'CLOCK**—Mixed colors. An old favorite. Pkt. 5c; oz. 15c.
- ZINNIA**—Giant flowering. Mixed. Bloom profusely. Fine for cutting. Pkt. 5c.
- MARIGOLD**—Mixed. One of the last annuals to bloom in the fall. Long blooming season. Pkt. 5c.
- MORNING GLORY**—Japanese Mixed. The favorite of all. Pkt. 5c.
- POPPY**—Finest Mixed. Pkt. 5c.
- ORNAMENTAL GOURDS**—Mixed. Pkt. 5c.
- SNAP DRAGON**—Mixed colors. A splendid flower. Pkt. 10c.
- STRAWFLOWER**—Nothing like it for a winter bouquet. Pkt. 10c.
- PETUNIA**—Hybrida Mixed. Make beautiful border plants. Pkt. 10c.
- VERBENA**—Mixed. Pkt. 10c.

FLOWER SEED COLLECTION

Ten popular varieties. A rainbow of color all summer. A packet of each of the following.

- ASTERS
- CALENDULA
- COSMOS
- PETUNIA
- ZINNIA

- SNAPDRAGONS
- STRAWFLOWERS
- DWARF NASTURTIUMS
- MARIGOLDS
- SWEET PEAS

A \$1.00
Value
All for

60c

QUALITY LAWN GRASS SEEDS

Select grade, tested for purity and germination. There is cheaper grass seed but none better. A beautiful lawn is the desire of every home owner and to have one it is essential to sow good seed. For new lawns 1 lb. of grass seed will sow 200 square feet. For old lawns one-half as much is required.

"SHADY SPOT" LAWN SEED

For the shady places in your yard we have prepared a mixture of grasses. Before sowing in such places it is well to rake the surface thoroughly and then apply lime. ½ lb. 29c; 1 lb. 44c; 5 lbs. \$1.98.

KENTUCKY BLUE GRASS

The best known of all the natural grasses, does well everywhere and is very hardy. Is largely used in lawn making and starts growing early in the spring, continuing until the ground freezes late in the fall. ½ lb. 22c; 1 lb. 33c; 5 lbs. \$1.40.

WHITE CLOVER

Extra Fancy Seed—A lawn can be quickly established by sowing this extra fancy grade of seed. It is very good to use in renovating old lawns. ½ lb. 35c; 1 lb. 52c; 5 lbs. \$2.45.

EVERGREEN LAWN GRASS

Is composed of Kentucky Blue Grass, Red Top, English Rye Grass, White Clover and other fine grasses. We combine these because they grow quickly and protect the blue grass, which is slower to germinate, thereby giving not only a permanent lawn but a good sod in six weeks time. ½ lb. 23c; 1 lb. 39c; 5 lbs. \$1.75.



BULBS - TIPPEGANOE CITY, OHIO - SEEDS



VEGETABLE SEEDS

Highest quality, triple tested for germination, productiveness, and vitality. Only select strains of the best varieties listed. Don't confuse our large 2 ounce packets with the ordinary 5c or 10c size which usually has smaller amounts of seed per packet.

BEANS

Burpee's Stringless Green Pod—Good yielder; easy culture. 2 oz. pkt. 8c; ¼ lb. 12c; 1 lb. 33c.
Improved Golden Wax—Stringless and brittle; early maturity. 2 oz. pkt. 8c; ¼ lb. 12c; 1 lb. 33c.
Giant Stringless Green Pod—Extra long, round pod. 2 oz. pkt. 8c; ¼ lb. 12c; 1 lb. 33c.
Pencil Pod Black Wax—Best dwarf wax bean. 2 oz. pkt. 8c; ¼ lb. 12c; 1 lb. 33c.
Burpee's Improved Bush Lima—Clusters of large pods. 2 oz. pkt. 8c; ¼ lb. 14c; 1 lb. 38c.
Pole Lima Bean Kentucky Wonder—Early; high quality and yield. 2 oz. pkt. 8c; ¼ lb. 12c; 1 lb. 33c.

BEETS

Detroit Dark Red—Most popular variety. Pkt. 5c; 1 oz. 10c; ¼ lb. 33c.
Crosby Egyptian—Extra early improved strain. Pkt. 5c; 1 oz. 10c; ¼ lb. 33c.
Mammoth Long Red Mangel or Stock Beet—30 to 50 tons per acre. 1 oz. pkt. 8c; ¼ lb. 23c; 1 lb. 55c; 5 lbs. \$2.00.

CABBAGE

Early Jersey Wakefield—Large, best, extra early. Pkt. 5c; 1 oz. 22c.
Copenhagen Market—Tender, large, early. Pkt. 5c; 1 oz. 23c.
Late Flat Dutch—Extra large, late. Pkt. 5c; 1 oz. 23c.

CARROTS

Danvers Half Long—Sweet and crisp. Pkt. 5c; 1 oz. 14c.
Chantenay Half Long—Thick, fine grained. Pkt. 5c; 1 oz. 14c.

CUCUMBER

Improved White Spine—Smooth and uniform. Pkt. 5c; 1 oz. 12c.
Chicago Pickler—Early; heavy yielder. Pkt. 5c; 1 oz. 12c.
Improved Long Green—Popular; strong vine. Pkt. 5c; 1 oz. 12c.

SWEET CORN

Golden Bantam—Sweetest of all. 2 oz. pkt. 8c; ¼ lb. 12c; 1 lb. 30c.
Stowell's Evergreen—Tender large ears. 2 oz. pkt. 8c; ¼ lb. 12c; 1 lb. 30c.
Country Gentleman—Late; richest flavored. 2 oz. pkt. 8c; ¼ lb. 12c; 1 lb. 30c.

LETTUCE

Black Seeded Simpson—Tender curly leaves; popular. Pkt. 5c; 1 oz. 12c.
Iceberg—Compact, sweet, crumpled heads. Pkt. 5c; 1 oz. 12c.

MUSKMELON

Tip Top—Popular all round variety. Pkt. 5c; 1 oz. 14c.
Ohio Sugar—Green fleshed Tip Top. Pkt. 5c; 1 oz. 14c.
Honey Rock—New Early; extra sweet. Pkt. 5c; 1 oz. 15c.

PEAS

Alaska—Earliest grown. 2 oz. pkt. 8c; ¼ lb. 12c; 1 lb. 30c.
Little Marvel—High quality and yield. 2 oz. pkt. 8c; ¼ lb. 15c; 1 lb. 33c.
Laxtonian—Extra Large and prolific. 2 oz. pkt. 8c; ¼ lb. 15c; 1 lb. 33c.

PUMPKINS

Small Sugar—Small; good keeper. 1 oz. 8c; ¼ lb. 28c.
Squash—Choice of Green Hubbard or Giant Golden—Straight neck. 1 oz. 15c; ¼ lb. 35c.

RADISH

Early Scarlet Globe—Early; high quality. Pkt. 5c; 1 oz. 8c; ¼ lb. 27c.
White Icicle—Large; excellent flavor. Pkt. 5c; 1 oz. 8c; ¼ lb. 27c.
Cincinnati Market—Best long red. Pkt. 5c; 1 oz. 8c; ¼ lb. 27c.

TOMATOES

Earleana—Early and sweet. Pkt. 5c; 1 oz. 28c.
Bonny Best—Bright Scarlet; early. Pkt. 5c; 1 oz. 30c.
Marglobe—Blight resistant. Pkt. 5c; 1 oz. 32c.
Ponderosa—Large and meaty. Pkt. 5c; 1 oz. 39c.

TURNIPS

Choice of Purple Top, White Globe or Strap Leaf. Pkt. 5c; ¼ lb. 22c.

WATERMELONS

Kleckley's Sweet—Large Early Pkt. 5c; 1 oz. 10c.
Tom Watson—Delicious flavor. Pkt. 5c; 1 oz. 10c.
 Broccoli; Brussels Sprouts; Cauliflower; Collards; Celery; Egg Plant; Endive; Kale; Kohlrabi; Leeks; Mustard; Onion; Okra; Parsnips; Parsley; Peppers; Salsify; Spinach. Liberal size packets, 10c each.

A \$1.00 VEGETABLE SEED COLLECTION FOR 60c

¼ lb. Burpee's Stringless Beans	.12	1 oz. Early Scarlet Globe Radish	.08
1 oz. Detroit Beets	.10	¼ lb. Golden Bantam Corn	.12
1 oz. Danvers Half Long Carrots	.14	1 oz. White Globe Turnip	.10
1 oz. Black Seeded Simpson Lettuce	.12	1 oz. Spinach	.10
¼ lb. Alaska Peas	.12		
			<u>\$1.00</u>

Beautify With Hedges

ALTHEA

These free-flowering shrubs make wonderful hedges and once known will be planted more often. They can be kept trimmed quite low, or can be allowed to grow tall as a screen. A hedge of them in bloom with all colors of flowers is a wonderful sight. 15 to 18 inch plants 10 for 45c; 25 for \$1.00; 50 or more 3c each.

PRIVET

AMOR RIVER—The hardiest of all hedge plants. Beautiful upright growth and makes a very compact hedge. Will hold its foliage until the middle of October or later. 12 to 18 inch plants 10 for 75c; 25 for \$1.35; 50 or more 5c each; 18 to 24 inch plants 10 for 89c; 25 for \$1.79; 50 or more 6c each.

CALIFORNIA—Of all the hedge plants this is the most popular, and more of it is planted than all others combined. It is of free growth and succeeds under the most adverse conditions. Foliage is bright green. 12 to 18 inch plants 10 for 49c; 25 for 97c; 50 or more 3½c each; 18 to 24 inch plants 10 for 59c; 25 for \$1.25; 50 or more 4½c each.

LODENSE—Low growing Privet. Derives its name from the fact that it has very dense dark green foliage and is dwarf or low growing. Unexcelled when used as a border or in front of other shrubs. Can be trimmed into formal shape or left to grow natural. 2 yr. 8 to 12 inch plants, 10 for \$1.00; 25 for \$2.25. Order early as our supply is limited.



SPIREA

VAN HOUTTEI—A more graceful object than a Spirea hedge in full bloom is difficult to find, with its slender drooping branches covered with a mass of white flowers in May. 12 to 18 inch plants 6 for 60c; 12 for \$1.00; 25 for \$1.75; 50 or more 6c each.

Plant Beautiful Evergreen Hedges

FOR SUMMER AND WINTER BEAUTY

You can now plant evergreens for hedges at low cost with Spring Hill's wholesale prices.

See descriptions of the following small evergreens for hedges on pages 15, 16, and 17.

	Size	Age	10	25	100
Balsam Fir	6-9"	3 yr.	.80	\$1.75	\$5.95
Douglas Fir	6-9"	3 yr.	.90	2.00	6.95
American Arbor Vitae	6-9"	4 yr.	.80	1.75	5.95
Norway Pine	6-8"	3 yr.	.90	1.75	5.95
Mugho Pine	4-6"	3 yr.	.90	1.75	5.95
Biota Orientalis	4-6"	2 yr.	.50	1.00	2.95
Concolor Fir	6-8"	4 yr.	.90	2.00	6.95
Norway Spruce	6-9"	3 yr.	.60	1.25	3.95
Juniper Ashfordi	12-15"	3 yr.	1.25	2.75	10.00

(No orders for less than 10 of a kind accepted)

The following evergreens are heavy field grown sheared plants, dug and shipped with roots puddled and wrapped in moss. These evergreens are beautiful plants that can be used as specimens around the house as well as for hedges. Descriptions on pages 15, 16, and 17.

	Size	Age	Ea.	3 pl'ts
American Arbor Vitae	3'	9 yr.	.45	\$1.25
Chinese Arbor Vitae	3'	8 yr.	.45	1.25
Austrian Pine	3'	7 yr.	.45	1.25
Scotch Pine	3'	7 yr.	.45	1.25
Mahonia	10-15" plants		10 for \$1.50; 25 for \$3.00; 100 for \$8.00.	

Write our Landscape Department for FREE Advice

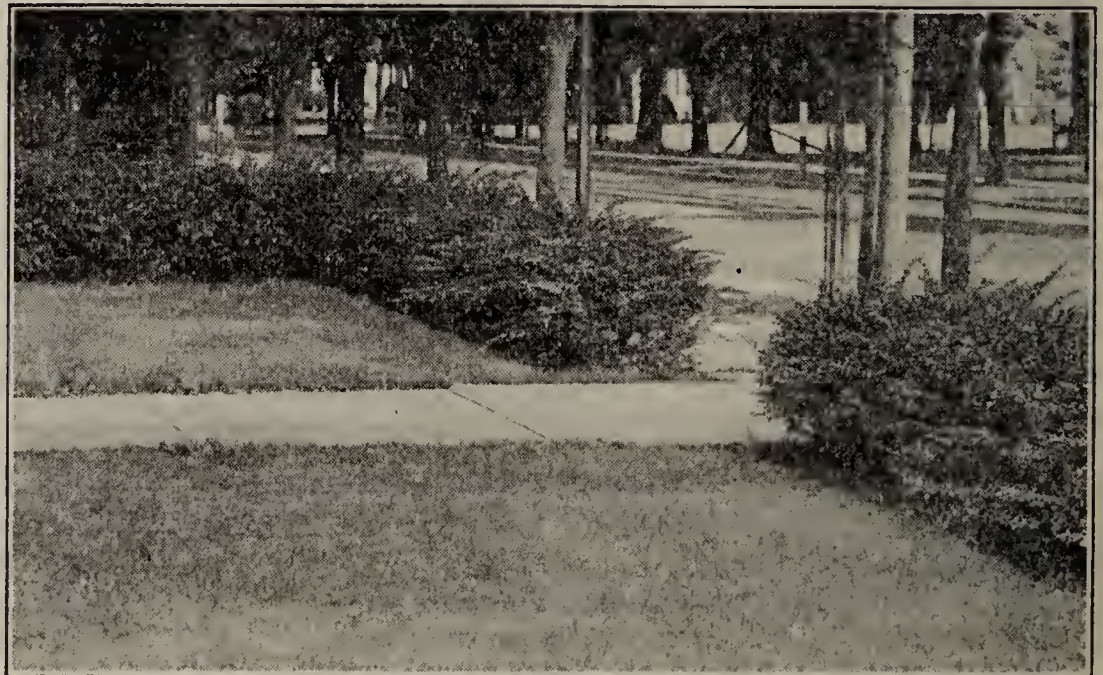
Garden Seeds on Page 29

BARBERRY

GREEN LEAVED—See description on page 27. 3 yr. old field grown plants, 1 to 1½ ft., 10 for 98c; 25 for \$2.25; 50 or more 8c each.

GREEN LEAVED (Hedging Size)—12 to 15 inch plants with branched tops 10 for 66c; 25 for \$1.45; 50 or more 5c each.

RED LEAVED—See description on page 27. 3 yr. old field grown plants, 1 to 1½ ft., 25c each; 5 for 98c; 10 for \$1.75; 25 for \$3.95; 50 or more 15c each; 2 to 2½ ft., extra heavy plants, 35c each; 3 for \$1.00.



Barberry Hedge

HARDY VINES

—FOR EVERY PURPOSE—

AMPELOPSIS

BOSTON IVY—Used extensively on brick or stone houses. Grows very rapidly. Glossy green leaves which stay on most all winter and turn to a brilliant orange-scarlet in the fall. 2 yr. old plants 40c each; 3 for \$1.00.

VIRGINIA CREEPER—Fast growing, easy culture, hardy, and a most beautiful vine in autumn. For unsightly buildings, stumps, walls, fences, trees, etc., nothing better. 2 yr. old plants 40c each; 3 for \$1.00.



CLEMATIS—LARGE FLOWERING

JACKMANII—Violet-purple flowers. 2 yr. old plants 70c each; 2 for \$1.25.

VEILLARD—Rich pink flowers. 2 yr. old plants 70c each; 2 for \$1.25.

MME. ED. ANDRE—Large red flowers. 2 yr. old plants 70c each; 2 for \$1.25.

HENRYII—Large white flowers. 2 yr. old plants 70c each; 2 for \$1.25.

CLEMATIS SPECIAL
CLEMATIS VITALBA or **TRAVELER'S JOY**—A rare species from England. The most vigorous of all Clematis, growing 20 to 30 ft., covered with white flowers 3/4 in. across with a faint odor of almonds, followed by clouds or misty clusters of seeds. 2 yr. plants 60c each; 2 for 98c.

TRUMPET CREEPER

A wood vine; twining tightly with numerous roots along stems. Flowers in clusters of orange-scarlet at tip of branches. 2 yr. old plants 35c each; 3 for 80c.



DUTCHMAN'S PIPE

ARISTOLOCHIA TOMENTOSA—A vigorous growing vine producing in abundance a purplish blossom much resembling a pipe. Price, 2 year old plants, 35c each; 2 for 69c.



EUONYMUS

RADICANS VARIEGATA—Attractive dark-leaved vine with creamy white variegated edges. For covering walls or house foundations. Not fast growing but the evergreen leaves stay on all winter and it will grow in sun or shade and tolerate poor soil. 2 yr. old plants 40c each; 3 for \$1.00.

VEGETUS—Evergreen. Can be used either as a vine or trimmed into shrub shape. Large thick dark green leaves. Has no equal. 2 yr. old plants 55c each; 2 for 95c.

SPECIAL
EUONYMUS COLORATA
 Hardy fast growing evergreen vine. Fine for covering walls or unsightly places. Used extensively in evergreen plantings to cover bare ground. 2 yr. old plants 25c each; 3 for 65c.

BITTERSWEET

CELASTRUS SCANDENS—Valuable for its berries which are used for interior decoration through the winter. Used to cover unsightly fences or stone walls. 35c each; 3 for \$1.00.

NEW

SILVER LACE VINE
POLYGONUM AUBERTI—Something entirely different in the way of vines. It will make a growth of 25 feet or more in one season. Covered with sprays of silvery-white flowers in the spring and again in autumn. Strong plants that will bloom this year. 65c each; 2 for \$1.19.

HONEYSUCKLE

HALLEANA—A quick growing evergreen vine with fragrant flowers of white and yellow. 30c each; 4 for \$1.00.

FOX GRAPE

Fine for covering porches, summer houses, and arbors, giving an abundance of small fruit in the fall. 25c each; 3 for 60c.

SCARLET AND YELLOW TRUMPET—Similar in growth to the above but with heavy glossy round-like leaves. Long trumpet-shaped flowers. 30c each; 4 for \$1.00.

CINNAMON VINE

Will make a vigorous growth of 15 to 20 ft. in one season. Has attractive bright green foliage and small white fragrant flowers. 2 yr. bulbs or tubers. 15c each; 3 for 35c.

KUDZU VINE

A hardy vine with large, tuberous starchy roots making a most remarkable, vigorous growth of slender, hairy stems. Will grow to 60 feet in a season. 20c each; 3 for 50c.

WISTERIA

PURPLE—Very fast growing. Blooms quite young. Makes a magnificent sight with its drooping clusters of purplish pea-shaped flowers often a foot or more long. 50c each; 2 for 90c.



CHINESE WISTERIA

SPRING HILL'S SELECTED



Lady M. Stewart

On this page you will find the very latest introductions in roses, as well as some older ones. However, we have selected what we believe to be the "high spots" in roses.

We are offering the following varieties in 2 year old field grown stock at 48c each or 5 for only \$1.95.

SENSATION—This rose has very large fragrant flowers of scarlet-crimson with maroon markings. A very dependable rose, blooming all summer long.

LADY MARGARET STEWART—Here we have one of very recent introduction, with large pointed, deep orange-yellow buds opening to an extremely well-shaped flower, marked with shades of orange, carmine, and red. An exhibition variety.

MEVROUW G. A. VANROSSEM—A novelty rose with brownish yellow flowers, highly shaded with copper-pink. A very striking rose and one that should be in every garden.

MRS. HENRY BOWLES—A rose of very fine form with flowers of a clear, glistening pink. Very free bloomer and extra good.

MRS. PIERRE S. DUPONT—A late introduction with buds of reddish gold, opening into beautiful yellow flowers. This is one of the very best roses.

PATENTED ROSES

Under patented roses we are listing only a few which we consider the very best. The prices we are asking are set by the originators.

These roses are a source of wonder and delight to every garden, as they are the champions of the foremost shows of the country. They are valued so highly that they are protected by patents.

COUNTESS VANDAL—Plant Patent No. 38—The long pointed bud, upright stems for cutting, rich coloring and large flowers make it one of the most popular roses in American gardens. The color combination consists of pink, copper, gold, and salmon, producing a peculiar effect changing as the bloom ages. \$1.00 each; 3 for \$2.50.

BETTER TIMES—Plant Patent No. 23—The brilliant cerise flowers are large, double and very fragrant. Being produced on long, strong stems, makes them fine for cutting. A very free bloomer. \$1.50 each; 3 for \$3.75.

AMELIA EARHART—Plant Patent No. 63—This startling new everblooming rose is unique in both form and color. Flower is very full, changing from a deep yellow center to an outer color of creamy petals with rosy sheen. Deeply scented. \$1.50 each; 3 for \$3.75.

GOV. ALFRED E. SMITH—Plant Patent No. 62—A large salmon and gold bloom that is rounded like a "bomb" peony. This is an outstanding rose for bedding. \$1.25 each; 3 for \$3.15.

BLAZE—Plant Patent No. 10—The most popular of all new climbing roses—the only hardy everblooming scarlet climber. It has every element to insure its success, for it continues the vigor, beauty, and hardness of Paul's Scarlet. \$1.25 each; 3 for \$3.15.

Let Us Select Five Roses For Your Rose Bed

All For \$1.29

We are making this offer believing thousands of rose enthusiasts will grab at the opportunity to get the best in roses at this ridiculously low price, never before offered for 2 year old field grown roses.

The colors will be 1 Red, 1 White, 1 Yellow, 1 Pink, and 1 exquisite Two Tone—Yellow and Orange. Each will be a well-known rose, but will be labeled as to color only.



Dupont

FIVE ROSES OUR SELECTION FOR \$1.29



Countess Vandal

FAVORITE COLOR COLLECTION 2 For 54c

We are making this special offer for the rose growers who like one special color.

Two-tone Roses	(2 Varieties, our selection)	54c
Red Roses	(2 Varieties, our selection)	54c
Pink Roses	(2 Varieties, our selection)	54c

EVERBLOOMING ROSES

We have personally selected these roses as the most desirable ones for the rose garden. They have been selected for both their blooming qualities and hardiness.

ANY ROSE ON THIS PAGE

2 YEAR FIELD GROWN

5 for \$1.48

3 for .97

1 for .36

DAME EDITH HELEN—Great double flowers of deep pink. Free bloomer.

LOS ANGELES—Flowers large; the color flame-pink, toned with coral and

BETTY UPRICHARD—Large semi-double, salmon-pink flowers, stained with copper-pink on the outside. Extra good.

PINK RADIANCE—Large brilliant rose-pink blooms. This is one of the hardiest of roses, and one of the best.



Radiance

RED RADIANCE—Large globular flowers of deep rose-red on strong individual canes. Will thrive in any soil or climate. A free bloomer

GRUSS EN TEPLITZ—Fiery crimson, shaded with a dark velvety sheen, unlike any other color. Blooms are in clusters. Very good.

ETOILE DE HOLLANDE—The finest and most fragrant dark red rose for general purposes. This is one of the very best of the late introductions among the red everblooming roses.

OLYMPIAD—This glorious rose is a prize winning variety. Reddish-pink flowers with orange undertone and yellow base. Very flashy.

JOANNA HILL—Fragrant double flowers of clear yellow with rich golden orange centers. Large, pointed buds which have excellent keeping qualities. Fine for cutting.

PRESIDENT HERBERT HOOVER—The outstanding novelty rose recently introduced. The color combination is unique—a blending of maroon, orange, and gold. A remarkably vigorous grower and a free bloomer.

SUNBURST—The color is orange-copper or golden yellow; edge of petals lighter; all intense shades, extremely brilliant in effect. This is the most magnificent of all yellow roses.



Pres. Hoover

GLORIA MUNDI—Well formed flowers of brilliant scarlet-orange. No other color like it.

Mlle. CECILE BRUNNER—The most exquisite baby rose. Frequently called "Sweetheart". Color is soft pink deepening to rose.

THE TINIEST ROSE IN THE WORLD

ROSA ROULETTI—A distinct new novelty—nothing like it. Entire plant not over 10 inches high. Covered with tiny pink flowers. Blooms all season. Adaptable for rock gardens, border planting and can be grown in the house. 50c each; 3 for \$1.35.

REV. F. PAGE-ROBERTS—This is one of the richest, fullest, and most perfect roses yet introduced. The buds are beautifully marked and marbled with carmine-red. Every rose connoisseur should have one of these remarkable roses.

TALISMAN—Rich shadings and blendings of pure scarlet and gold. Beautiful cupshaped buds and full flowers, very fragrant. A very free bloomer and a winner of many prizes.

K. A. VICTORIA—Creamy white and very fragrant; buds are large and pointed and flowers very full and large. Hardy and a continuous bloomer.

BABY ROSES

Plant these delightful little roses for a continuous mass of bloom. These baby or Polyantha roses are just the thing for border planting.



Talisman

JUNE ROSES

OR HYBRID PERPETUALS

PAUL NEYRON—A magnificent rose with beautiful clear rose-pink flowers, immense in size, sometimes measuring 6 inches across. A strong upright grower and abundant bloomer.

FRAU KARL DRUSCHKI (White American Beauty)—One of the most striking pure white roses ever introduced. Large pointed buds and immense flowers 5 inches across, perfectly double with thick petals, sometimes tinged with pink.

HENRY NEVARD—This is a new and greatly improved Hybrid-Perpetual. Severe pruning by cutting off the old flowers, makes this an everblooming rose. Noted for its large, striking, velvety-scarlet blooms.

GENERAL JACQUEMINOT—An old favorite that has stood the test. An intense color of bright red; extra large, double, fragrant flowers.

ULRICH BRUNNER—Brilliant, light, cherry-red flowers of immense size. Fine form and very fragrant.

SPRING HILL'S

SELECTED CLIMBING ROSES



Madam Gregoire Staechelin

CLIMBING AMERICAN BEAUTY—Has all the characteristics of American Beauty; color, size, and shape of bloom. Also healthy foliage and strong climbing habit of growth. Very hardy. Abundance of beautiful fragrant, double, bright red flowers in early spring.

MADAM GREGOIRE STAECHELIN—Spanish Beauty—A recent European introduction gaining in popularity because of its outstanding characteristics. A free blooming variety with healthy foliage. Long full buds of soft pink flowers with crimson tips and delightful curled petals. Excellent cut flower. Long stems and large buds.

DR. VAN FLEET—Flowers when open run 4 inches or more in diameter. Borne on long stems, making them fine for cutting. Flowers resemble those sold by florists. Color is a delightful shade of flesh pink that does not fade.

GARDENIA—This is the hardy Marechal Niel. Golden flowers. The best creamy yellow climbing rose. Very free flowering.

PAUL'S SCARLET—The parent of Blaze and winner of Gold Medal as the best climbing rose at the National Society's Exhibition. Striking scarlet color. Large solitary flowers like Climbing American Beauty. Blooms over a long period.

JACOTTE—Noted for its rich color shades and

The Above Climbing Roses, 2 Year Field Grown Plants, 35c Each; 6 For \$1.75.

fragrance. Large flowers of orange-salmon with golden shadings. A very good hardy, disease-resistant variety.

SILVER MOON—Single rose of enormous size, pure white, with a center of golden stamens. Beautiful, glossy, bronzy-green foliage. Unusually luxuriant growth. One of the best.

Something New—CLIMBING ROSES—Something Different

SCORCHER—New everblooming Paul's Scarlet Climber—Commences flowering in the spring and is covered with a profusion of vermillion or scarlet-red flowers of large size throughout the season. The vivid or striking bright red ruffled flowers are the admiration of all who see them.

PRIMROSE—New. Flowers are large pure yellow and are produced in abundance with a back-

The Above 3 New Roses, 2 Year Field Grown, 45c Each; 3 For \$1.19.

ground of glistening metallic foliage. This rose will be a truly beautiful addition to your garden.

THE FAMOUS BLUE ROSE—Adds charm and distinction to your home; plant this new German novelty. The flower buds open to a reddish violet hue, changing to amethyst and steel blue as the flowers develop into their natural loveliness. A disease-resistant variety of rapid growth.

(**BLAZE**—The new patented climbing rose See description and price on page 32.)

NEW RUGOSA ROSE HYBRIDS

The Rugosas are a distinct addition to the rose family. Excellent for all purposes, blooming continuously through the season producing an abundance of bloom. They are of easy culture and will stand sub-zero weather. Used extensively for foundation plantings or as specimens. No rose lover should be without some of these attractive novelties.

F. J. GROOTENDORST—The leading Baby or Dwarf Rugosa, with dazzling red blooms produced in compact clusters of large semi-double flowers. A prize winner.

CONRAD FERDINAND MEYER—Very double silvery pink flowers. A strong growing variety. Very good.

AMELIE GRAVEREAUX—Beautiful cerise-red flowers or clusters of American Beauty Roses all summer. A new rose of real merit.

SIR THOMAS LIPTON—The White Rugosa. Clusters of beautiful pure white flowers. Extra good.

Rugosa Roses, 2 Year Field Grown, Specially Priced 30c Each; 4 For \$1.00

GOLDEN ROSE OF CHINA

Spectacular in its exotic beauty. A shrubby rose with graceful arching branches beneath loads of bright yellow flowers which appear in the early spring. Attractive deep red branches and shiny foliage. 2 year old plants 47c each; 3 for \$1.19.



Scorchers



Pussy Willow

PUSSY WILLOW

French Pussy Willow, not the common wild Pussy Willow. Cut the ends of the branches next January or February. Place them indoors in a vase of water. Watch them unfold their large catkins of silvery pink from 1 to 2 inches long. 2 to 3 ft. 40c each; 3 for \$1.00.



PINK FLOWERING SWEET PEA TREE

(Rose Acacia)—A small shrub or bush with elegant clusters of beautiful pink sweet pea-like flowers. 2 to 3 ft. plants 35c each; 4 for \$1.00.

SCARLET FRUITED THORN

A low growing tree. Very symmetrical. Loaded with beautiful scarlet fruit in late fall and early winter. 3 to 4 ft. plants 60c each; 3 for \$1.50.

ROSE TREE OF CHINA

(Prunus Triloba) — Covered with a mass of double pink flowers in early spring. The rose-like blossoms make good cut flowers. A hardy and easily grown little tree. 2 yr. 3 ft. plants 55c each; 2 for \$1.00 not prepaid.



Rose Tree of China

HARDY MYRTLE

The bright blue flowers appear in May and last for weeks. The foliage is a deep waxy green throughout the year. A useful evergreen plant for ground cover or shady places. 4 to 6 inch plants 15c each; 10 for \$1.00; \$8.00 per 100

GIANT BLUE HYDRANGEA

A hardy Japanese Hydrangea varying in color according to the (Hydrogen ion concentration) of the soil. Immense heads of blue to pink flowers. This semi-hardy Hydrangea survives the winter from New York, Cleveland and South but should have some winter protection. Blooming size pot plants; 90c each, 2 for \$1.75.

THE FAMOUS BLUE ROSE

VEILCHENBLAU—Add charm and distinction to your garden with this wonderful new German novelty rose. A beautiful violet-blue color. A rapid growing climbing rose. 40c each; 3 for \$1.00.

ROSE ROULETTI

The smallest rose in the world. Distinct new novelty—nothing like it. Entire plant not over ten inches high. Covered with tiny pink flowers. Blooms all season. Splendid for rockeries and can be taken up and potted for winter blooming indoors. 2½ inch pot plants, 50c each; 3 for \$1.35.

GOLDEN BARK WEEPING WILLOW

The most vigorous and graceful of all Weeping Willow. Beautiful golden yellow bark. Will grow any place. 3 to 4 ft. 40c each; 2 for 75c.

DOGZOFF

Most effective animal repellent. If you are bothered by dogs, cats or rabbits spray with Dogzoff. One application lasts from two to three weeks. Non-poisonous or offensive. Guaranteed; apply with small sprayer. Price for seasons supply 69c prepaid.



Weeping Willow



Blood Red Japanese Maple

TREE STRAWBERRY

Tree Strawberry or Strawberry-Raspberry is a new plant in habit of growth and form of fruit. Beautiful large, ruby-red fruit, striking white blossoms and glossy green foliage make it extremely attractive. Will give you a crop of berries for jams and jellies from early July till frost. Very hardy. 3 for 35c; 6 for 55c; 10 for 75c. Prepaid.



New Buddleia—Ille de France

BLOOD RED JAPANESE MAPLE

ACER PALMATUM OSHI-BENI—New deepest red variety imported from Holland. Popular low growing tree or tall shrub. Has star shaped leaves of a blood red color. If planted in a sunny location the leaves retain their bright red foliage all summer and fall. It is a plant that everyone admires, and attracts a lot of attention in any planting. 12 to 15 inch \$1.00 each. Prepaid.

THE WONDER PLANT

COLCHICUM—Blooms without soil, water or care. Just place it on table, window sill, desk, etc. Surprisingly beautiful. Guaranteed to bloom. Characteristic and cultural instructions mailed with each order. Delivered in July. 1 bulb 30c; 4 for \$1.00; blooming size 25c each; 5 for \$1.00. Prepaid.

CORNELIAN CHERRY

CORNUS MASCULA—Handsome shrub or small tree of dense growth. Leaves a dark glossy green. The pretty curly yellow flowers appear in early spring before the leaves. It is covered with large, waxy, scarlet fruit in the fall. A rare shrub suitable for specimen, foundation, and border planting. 1 to 1½ foot plants 40c each; 3 for \$1.00.

PINK CUSHION MUM

(See Cover Page)

PUMILA

DWARF IRIS—Excellent for border and rockery. Like other Iris except only 6 to 9 inches tall. Beautiful sky-blue miniature flowers. 5 for 25c. Prepaid.

EDELWEISS

The alpine flower of distinction. Only 4 to 5 inches high. Silver foliage with woolly like appearance. Attractive frost like flowers tinted with yellow. 20c each; 3 for 54c; 6 for \$1.00. Prepaid.



Edelweiss

NEW ALL AMERICAN GRAPES

RED CACO—Early to bear; large compact bunches of delicious red grapes of the best quality. The highest honors were awarded this grape by the New York horticulturists. 45c each; 3 for \$1.14.

WHITE PORTLAND—Earliest white grape. Very sugary and sweet. Heavy yielder; will overbear if not properly pruned. Very best color, size, and quality. 60c each; 2 for \$1.00.

BLUE FREDONIA—Considered one of the best of the new grapes. Two weeks earlier than Concord but hangs on the vines just as late. Larger clusters of blue, plump, juicy berries of high quality. 30c each; 4 for \$1.00.

ALL AMERICAN GRAPE COLLECTION

One each of the above new grapes for only \$1.14 prepaid.

NEW BUDDLEIA—ILLE DE FRANCE

A new variety with distinct uniform habit of growth with many outstanding characteristics. Rich purple spikes of tremendous size. The bush is a mass of bloom from July till frost. You will be proud of this variety in your garden. 40c each; 3 for \$1.00; 6 for \$1.75; prepaid.

FROM

Name.....

Street.....

City.....

State.....

SPRING HILL NURSERIES

TIPPECANOE CITY,

O H I O

Before Sealing

be sure you have written your name and address on the letter and envelope. All members of the same family please order under one name.

NEW AND RARE PLANTS

— SPECIALLY PRICED — TRITOMA-RED HOT POKER

Sometimes called Torch Flower. It will bloom the first season, sending up tall stems with bright red or flame-colored flowers. The plants are hardy and have five to a dozen flower stalks the first year. **17c each; 3 for 40c.**

THREE NEW CHRYSANTHEMUMS

Early blooming, semi-dwarf varieties of proven merit at special prices.

ALADDIN—The earliest to bloom; 6 to 8 weeks earlier than other hardy kinds. Beautiful large semi-double bronze flowers from July till late fall. **30c each; 4 for \$1.00.**

NEW OHIO STATE—Prize winning, hardy, greenhouse type. This new clear sulphur-yellow variety is free blooming. Often 50 or more blooms the first year. **40c each; 3 for \$1.00.**

PINK CUSHION—See front cover for description. **27c each; 3 for 75c.**



Red Hot Poker



Painted Daisy

GLORIOUS ASTILBES OR PERENNIAL SPIREAS

Individual plants have from 20 to 50 spikes of large, plummy, colorful flowers. Very hardy and showy. To insure greater success with these plants give plenty of moisture and some shade. The Astilbe flower commands a fancy price in the florist trade. Plant the varieties we are offering and enjoy them in your garden.

Palmata—Rose pink.

Rose Pearl—Shell pink.

W. H. Gladstone—Snow white.

We are offering strong field grown clumps at 35c each; 2 for 59c.

PRUNUS YEDOENSIS

A rare and valuable Japanese flowering cherry. The one so generally planted in parks, temple grounds, cemeteries, and streets of Tokyo. The flowering of this plant is the occasion of a popular festival in Japan. The delightful pink flowers are double to semi-double and produced in clusters of 5 to 6 blooms. The celebrated flowering cherry planted at Washington, D. C. **SAVE MONEY. 18 to 24 inch plants 55c each; 2 for \$1.00.**

DOUBLE OR CUSHION FLOWERING PAINTED DAISIES

In addition to exquisite coloring, the centers of the flowers are covered with beautiful compact pads of miniature petals. The dark red flowers are borne on long stems and make fine cut flowers that command the highest prices. The flowers are admired by all and will add a decided charm to your garden. **2 yr. clumps 35c each; 2 for 59c.**



Amaryllis

BLUE SPIREA

Attractive flowers of lavender-blue covering the full length of the stems from August until killed by frost. This semi-dwarf shrub grows about 2 to 3 feet tall and has beautiful grayish-blue foliage. Plants will sometimes freeze to the ground in the North but will grow from the roots each spring. Heavy 2 yr., 18 to 24 inch plants, **35c each; 2 for 59c.**

HARDY AMARYLLIS LYCORIS

LYCORIS SQUAMIGERA (Magic or Fairy Lily)—The only hardy and fragrant Amaryllis grown. A native of Japan, has immense flowers of a rosy-lilac color in the fall. It is easily grown and will prove a pleasure to all planters. Perfectly hardy and blooms second year after planted. If left undisturbed will multiply and produce a large mass of bloom each year. **75c each; 2 for \$1.40.**

NEW ROSES



Ami Quinard

Lord Charlemont

Hollywood

Beautiful Roses At Appealing Prices

We have selected these six roses as the most outstanding of the newer varieties

AMI QUINARD (The Black Rose)—A deep dark red, being almost as black as Nigrette, the patented rose, but a more prolific bloomer and much larger in size. You will be proud to display this new rose. Order early; supply limited.

GOLDEN DAWN—This is the ideal yellow rose. The buds are heavily splashed with crimson and develop into well formed fragrant, large, double sunflower yellow flowers.

EDEL—Large double pure ivory-white flowers. The best of the recent white introductions. The beautiful large fragrant flowers are produced in abundance all summer. Edel in our test gardens has proven superior to other white varieties.

LORD CHARLEMONT—An intense bright red; very double flowers. Blooms profusely throughout the season. This new variety is winning popularity.

EDITH NELLIE PERKINS—This is an outstanding, vigorous, and free flowering rose. Long pointed buds of good size opening into large double flowers of rich orange pink outside and salmon pink inside with a golden underglow.

HOLLYWOOD—Flowers open to a deep pink, becoming brighter as they develop. The buds are large and have excellent keeping qualities. This is one of the finest of the recent pink creations.

We are offering these new heavy 2 year field grown roses at the very low price of 60c each or all 6 for \$2.95 PREPAID.

Sec. 562 P. I. & R.



AGRICULTURE,

WASHINGTON, D. C.

FAU OF PLANT INDUSTRY
Vegetable Crops and Diseases

6 P o 8-3591